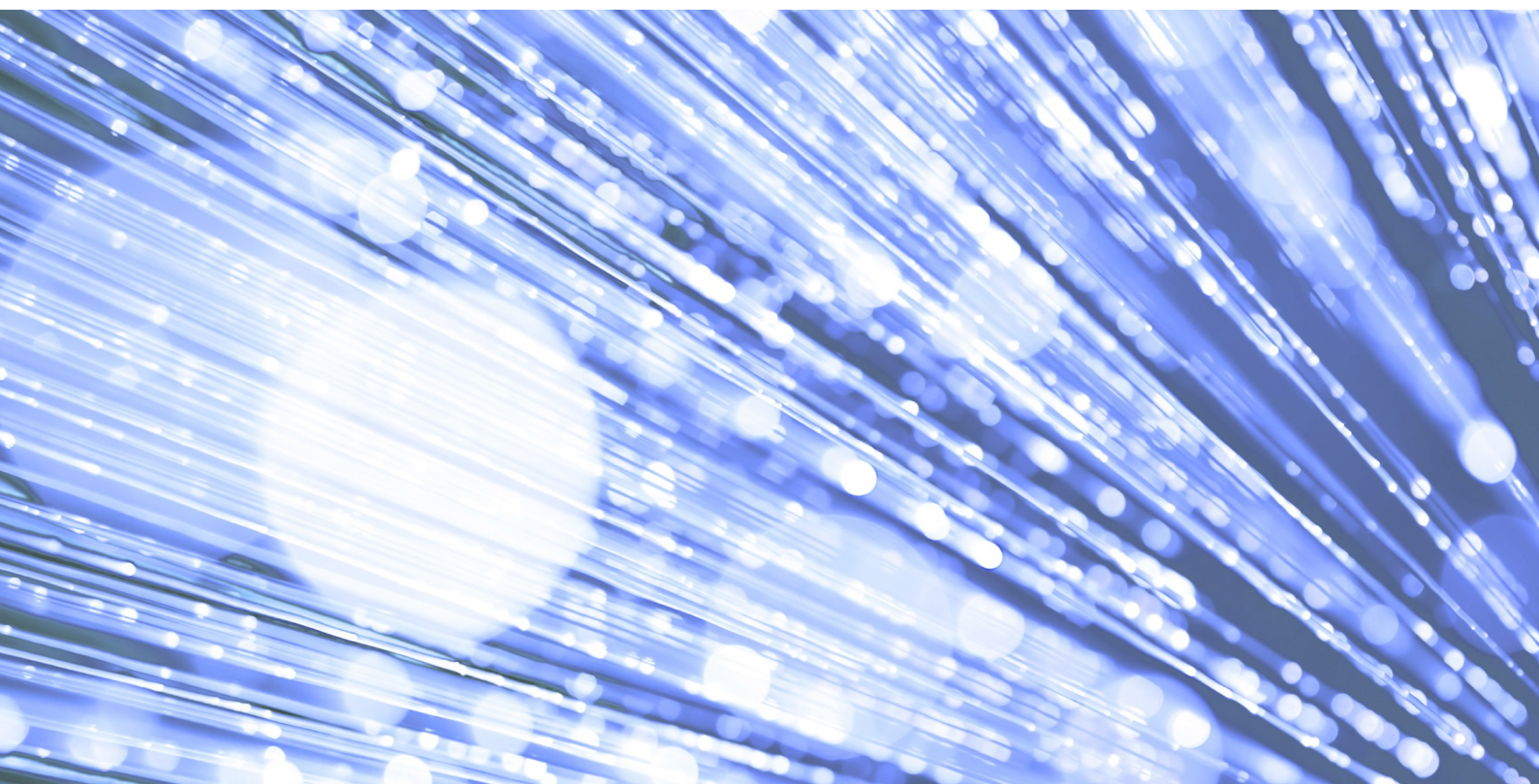


DAPB1520 Improving Access to Psychological Therapies (IAPT) Data Set v2.1 Change Specification

Published 20 July 2021



Information and technology
for better health and care

Copyright ©2021 Health and Social Care Information Centre

The Health and Social Care Information Centre is a non-departmental body created by statute, also known as NHS Digital.

Data Alliance Partnership Board

Acting on behalf of the Data Alliance Partnership Board (DAPB), which holds delegated authority from the Secretary of State for Health and Social Care, the Data Alliance Partnership Sub Board (DAPSB) has approved a change to an existing information standard for publication under [section 250 of the Health and Social Care Act 2012](#).

Assurance that this information standard meets the requirements of the Act and is appropriate for the use specified in the specification document has been provided by the Data Standards Assurance Service (DSAS) and approved by the Data Alliance Partnership Board (DAPB).

This information standard comprises the following documents:

- Requirements Specification
- Implementation Guidance
- Change Specification
- Technical Output Specification (TOS).

An Information Standards Notice (DAPB1520 Amd 13/2021) has been issued as a notification of use and implementation timescales. Please read this alongside the documents for the standard.

The controlled copies of these documents can be found on the [NHS Digital website](#). Any copies held outside of that area, in whatever format (e.g. paper, email attachment), are considered to have passed out of control and should be checked for currency and validity.

Date of publication: 20 July 2021

Update 6 October 2021

At the time of publication of version 2.1 (20 July 2021), users were expected to fully conform with this standard by 25 March 2022. Due to continuing investment in COVID-19 activity, NHS Digital has since extended the implementation and conformance dates of this standard by three months. Full conformance is now expected with the submission of the April 2022 reporting activity by 29 June 2022.

Where dates throughout this document refer to 1 January 2022, this should now be read as 1 April 2022; where dates refer to 1 February 2022 this should now be read as 1 May 2022; where dates refer to 25 March 2022 this should now be read as 29 June 2022.

The Requirements Specification, Change Specification, and Implementation Guidance have been updated to reflect this.



This information is licensed under the Open Government Licence v3.0. To view this licence, visit <http://www.nationalarchives.gov.uk/doc/open-government-licence/> or write to the Information Policy Team, The National Archives, Kew, Richmond, Surrey, TW9 4DU.

Glossary of Terms

A full Glossary of Terms for the IAPT Data Set v2.1 Information Standard can be found within the Requirements Specification.

Contents

1. Overview	4
1.1. Summary	4
1.2. Supporting documents	6
1.3. Related standards	7
2. Background and justification for release	8
2.1. Collection of new/amended data	8
3. Detail of changes	8
3.1. Gender Items	8
3.2. Addition of Medical History (Previous Diagnosis) Table	9
3.3. Addition of Accommodation Type Table	10
3.4. Changes to support the Employment Advisors in IAPT program	11
3.5. Changes to Mandation Status	11
3.6. Deletion of data items that are no longer required within the data set	12
3.7. Amendments to ensure alignment with the NHS Data Model and Dictionary	13
4. Maintenance updates	15
5. Change control	15
Endnotes	15

1. Overview

1.1. Summary

Standard	
Standard Number	DAPB1520
Standard Title	Improving Access to Psychological Therapies (IAPT) Data Set
Description	<p>The Improving Access to Psychological Therapies (IAPT) Data Set is a patient level, output based, secondary uses data set which aims to deliver robust, comprehensive, nationally consistent, and comparable information for people accessing NHS funded IAPT services located in England.</p> <p>This national data set has been developed with the IAPT Programme to support service delivery and inform clinical decision-making and encourage improved access to talking therapies for people with common mental health problems such as depression and anxiety disorders.</p> <p>As a secondary uses data set it re-uses clinical and operational data for purposes other than direct patient care, for example: commissioning, service improvement and service design. It defines the data items, definitions, and associated value sets to be extracted or derived from local information systems. These national definitions allow providers to extract data from their local systems in a consistent manner, which supports national and local reporting to be undertaken.</p>
Applies to	<p><u>Patients</u></p> <p><u>In Scope</u></p> <p>All activity relating to people accessing NHS commissioned adult IAPT services for depression and anxiety in England.</p> <p>This includes activity relating to people under the age of 18 accessing NHS commissioned adult IAPT services.</p> <p><u>Out of Scope</u></p> <p>Activity relating to the provision of Children and Young People's (CYP) IAPT services is out of scope of this data set and should be included within the Mental Health Services Data Set (MHSDS).</p> <p><u>Organisation Types</u></p> <p>The standard must be used across the range of service providers and organisations that provide IAPT services including:</p> <ul style="list-style-type: none"> • NHS Mental Health Trusts • NHS Acute Trusts¹ • NHS Community Health Trusts¹ • Independent and third sector healthcare providers offering a service model that includes NHS funded patients¹

¹ Where there is direct provision of IAPT services

	<p><u>Organisation Departments</u></p> <p>The standard primarily, but not exclusively, must be read and used by all heads of IAPT services, and other clinical and support services that have an active involvement in delivering IAPT care.</p> <p><u>Professionals</u></p> <p>The standard primarily, but not exclusively, applies to the following professionals working in or supporting IAPT services:</p> <ul style="list-style-type: none"> • Care Professionals • Employment Advisers • Administrative personnel • Information and IT Professionals. <p><u>IT Systems</u></p> <p>The standard predominantly, but not exclusively, relates to clinical systems designed to support IAPT services, Patient Administration Systems (PAS) and Electronic Patient Records (EPR).</p>
Processing (analysis, publication and data linkage)	<p>The data held in the IAPT Data Set will be made available within NHS Digital for analysis, and also to other arm's-length bodies, NHS-funded adult IAPT service providers and commissioners and the wider mental health community, to support research and innovation and understand the impact of IAPT care on patient outcomes and experiences.</p> <p>Requests for data from the IAPT Data Set will be managed through NHS Digital's Clear Data Access Tools and Data Access Request Service.</p> <p>Information will be published in line with NHS Digital's duty to publish under section 260(1) of the Health and Social Care Act 2012, unless it falls within section 260(2) of the Act.</p> <p>IAPT data may also be linked to data held by NHS Digital from various other data sets and collections to provide richer information and enhance existing and develop new publications, and to respond to requests for data and information. More information about the data sets and collections that NHS Digital hold and that may be used for linkage can be found on the NHS Digital Data Collections and Data Sets webpage¹.</p> <p>IAPT data may also be linked to other data sets held by external bodies including Public Health England, NHS England and NHS Improvement and other researchers.</p>
Release	
Release Number	Amd 13/2021
Release Title	Version 2.1
Description	<p>An ongoing requirement exists to review the Improving Access to Psychological Therapies Data Set (IAPT) to ensure the content remains 'fit for purpose'. The changes included in this release relate to new government policy initiatives, resolution of issues within the previous data collection, and inclusion of other key stakeholder requirements. The changes to be made are as follows:</p> <ol style="list-style-type: none"> 1. Alignment with MHSDS on the capture of gender. 2. Facilitate the capture of medical history information by adding a Medical History table - IDS601 Medical History (Previous Diagnosis).

	<ol style="list-style-type: none"> 3. Addition of a new table to capture the type of accommodation that is the patient's main or permanent residence – IDS003 Accommodation Status. 4. Minor changes to the IDS004 Employment Status and IDS201 Care Contact tables to ensure the Employment Advisors in IAPT program remains 'fit for purpose'. 5. Changes the mandation status of two data items from Required to Mandatory: <ul style="list-style-type: none"> • 'Person Birth Date' in the IDS001 Master Patient Index table • 'Employment Status Recorded Date' in the IDS004 Employment Status table 6. Deletion of data items no longer required. 7. Other minor maintenance changes to respond to issues raised by, for example, the NHS Data Model and Dictionary Service.
Implementation Completion Date	<p><u>System Conformance</u></p> <p>From 1 January 2022, IAPT systems MUST be capable of capturing the information as defined in the Technical Output Specification for local use.</p> <p>From 1 February 2022, IAPT systems MUST be able to extract data recorded in local systems to enable IAPT submissions in accordance with this standard.</p> <p><u>Health and Care Organisations</u></p> <p>From 1 January 2022 providers of NHS funded IAPT services MUST be able to collect the information as defined in the Technical Output Specification for local use.</p> <p>From 1 February 2022, providers of NHS funded IAPT services MUST commence IAPT submissions in accordance with this standard.</p>
Full Conformance Date	25 March 2022 - This is the date the final IAPT v2.1 submission window closes for January 2022 reporting period data. Providers must be able to make a valid submission prior to this date, which includes data collected from 1 January 2022.

1.2. Supporting documents

This document should be read in conjunction with the following:

Ref #	Title
1	IAPT v2.1 Requirements Specification
2	IAPT v2.1 Technical Output Specification (TOS)
3	IAPT v2.1 Implementation Guidance
4	IAPT v2.1 Enhanced Technical Output Specification (ETOS)
5	IAPT v2.1 User Guidance
6	IAPT v2.1 Data Model
7	NHS Data Model and Dictionary Change Request

Please see section 2.5 of the *Implementation Guidance* for a full list and descriptions of each related document listed above and where they can be found.

1.3. Related standards

Reference	Title
DCB0011	Mental Health Services Data Set (MHSDS)
DCB1605	Accessible Information
ISB0149-02	NHS Number for Secondary Care
ISB0149-01	NHS Number for General Practice
SCCI0034	SNOMED CT
SCCI0021	International Classification of Diseases
DCB0090	Health and Social Care Organisation Reference Data
DCB2094	Sexual Orientation Monitoring
DCB3017	Overseas Visitor Charging Category (OVCC)

Further details regarding the above standards can be found on the [DAPB Standards and Collections webpage](#)ⁱⁱ. This webpage also contains a list of all current DAPB DCB, SCCI and Information Standards Board (ISB) standards and collections.

2. Background and justification for release

The IAPT Data Set applies to, and is used by, a wide range of stakeholders for various secondary uses purposes in support of the IAPT Programme. As such, the IAPT data set is regularly reviewed and updated in response to changes in policy and to ensure that stakeholders requirements continue to be met with minimal burden for data submitters.

NHS Digital maintain the content of the data set through consultation with these stakeholders, which include various sections of NHS England and NHS Improvement, Department of Health and Social Care (DHSC), Care Quality Commission (CQC), service providers, IT system suppliers and commissioners.

The IAPT Data Set has been collected since 2012 and during this time national reporting has expanded in line with improved data coverage.

The previous version, IAPT v2.0 (2020) introduced changes such as to re-design the data structure to align with a modular data design allowing the modules to be used consistently across other care settings and improve opportunities for reporting and data linkage across care settings. Additionally, this release introduced clinical terminology using SNOMED CT allowing the data set to respond more quickly to changes in clinical practice and to widen future information requirements to be met through the data set.

A number of changes are required to the data set for January 2022 to respond to changes in clinical practice or coding, changes to policy requirements, changes to the NHS Data Model and Dictionary in light of other Information Standards, and requests for amendments by care providers or system suppliers.

Further details on these drivers and justification for the changes being made to the data set are outlined below.

2.1. Collection of new/amended data

Since v 2.0 went live in September 2020, a number of reporting requirements have been identified that require additional data to be collected. Firstly, the recording of a person's gender identity in the most appropriate way, whilst allowing more granular analysis of the activities taking place within IAPT referrals, which was not possible in the previous release. Therefore, the previous data item has been replaced with a revised and more appropriate solution for the capture of gender. This release also includes two additional data tables to meet COVID 19 reporting in response to the pandemic and to capture the accommodation status of a patient to help identify any association between the patient's accommodation status and the type of IAPT care they are receiving. Other changes ensure alignment to related information standards that have been updated since version 2.0 went live, and to improve data quality through the improvement of validations.

3. Detail of changes

This section provides additional detail in relation to the individual changes made to the data set in support of the high-level drivers. The TOS fully defines the individual changes applied to the data set, with each change logged in the 'Change Control' tab.

3.1. Gender Items

Since IAPT v2.0 went live, NHS England and NHS Improvement received feedback from the provider community that the way that gender was previously recorded was insufficient as it did not allow for non-binary or trans identities to be captured.

Aim: To ensure alignment with the gender recording changes introduced in the Mental Health Services Data Set v5.0 and the NHS Data Model and Dictionary.

Benefits: To allow the capture of additional gender identities that were not possible in the previous release and to ensure consistency with other information standards, such as MHSDS.

Group / Table	Data Item Name	Item Amend Type	Previous	New	Additional Change Detail
IDS001 Master Patient Index	GENDER IDENTITY CODE	Addition	N/A	1: Male (including trans man) 2: Female (including trans woman) 3: Non-binary 4: Other (not listed) X: Not Known (not recorded) Z: Not Stated (person asked but declined to provide a response)	Introduced to provide improved values for recording gender identity. This item will be used for national reporting and should be populated.
IDS001 Master Patient Index	GENDER IDENTITY SAME AT BIRTH INDICATOR	Addition	N/A	Y: Yes - the person's gender identity is the same as their gender assigned at birth N: No - the person's gender identity is not the same as their gender assigned at birth X: Not Known (not asked) Z: Not Stated (person asked but declined to provide a response)	Additional item to record further granularity

3.2. Addition of Medical History (Previous Diagnosis) Table

Aim: Add the capability to capture diagnoses of medical history conditions, in particular to allow the recording of COVID-19 diagnoses. This has been achieved by adding the 'IDS601 Medical History (Previous Diagnosis)' table.

Benefit: To improve understanding of those patient's accessing IAPT services due to previous conditions, including COVID-19.

Group / Table	Data Item Name	Item Amend Type	Previous	New	Additional Change Detail
IDS601 Medical History (Previous Diagnosis)	N/A	Addition	N/A	N/A	New Table
IDS601 Medical History (Previous Diagnosis)	DIAGNOSIS SCHEME IN USE (MENTAL HEALTH)	Addition	N/A	N/A	The code scheme basis of the Diagnosis.
IDS601 Medical History (Previous Diagnosis)	PREVIOUS DIAGNOSIS (CODED CLINICAL ENTRY)	Addition	N/A	N/A	A unique identifier for a clinical diagnosis from a specific classification or clinical terminology.
IDS601 Medical History	DIAGNOSIS DATE	Addition	N/A	N/A	DIAGNOSIS DATE is the PERSON PROPERTY

Group / Table	Data Item Name	Item Amend Type	Previous	New	Additional Change Detail
(Previous Diagnosis)					OBSERVED DATE for the PATIENT DIAGNOSIS.

3.3. Addition of Accommodation Type Table

Aim: To allow the capture of a patient's accommodation status.

Benefit: To better understand the accommodation status of patients, in particular those with homeless status that are accessing IAPT services.

Group / Table	Data Item Name	Item Amend Type	Previous	New	Additional Change Detail
IDS003 Accommodation Status	N/A	Addition	N/A	N/A	New Table
IDS003 Accommodation Status	ACCOMMODATION TYPE	New	N/A	N/A	An indication of the type of accommodation that a PATIENT currently has. This should be based on the PATIENT's main or permanent residence.
IDS003 Accommodation Status	SETTLED ACCOMMODATION INDICATOR	Addition	N/A	N/A	An indication of whether the main/permanent residence of the patient is settled accommodation.
IDS003 Accommodation Status	ACCOMMODATION TYPE RECORDED DATE	Addition	N/A	N/A	The PERSON PROPERTY RECORDED DATE when the ACCOMMODATION TYPE was recorded.
IDS003 Accommodation Status	ACCOMMODATION TYPE START DATE	Addition	N/A	N/A	The date that the patient's accommodation type started.
IDS003 Accommodation Status	ACCOMMODATION TYPE END DATE	Addition	N/A	N/A	The date that the patient's accommodation type ended.

3.4. Changes to support the Employment Advisors in IAPT program

Aims: Adding and updating data items relevant to the Employment Advisors in IAPT program so that it remains fit for purpose.

Benefits: To allow the Employment Advisors in IAPT program to track the numbers finishing employment support, and to ensure the correct recording of employment support activity that takes place post therapy. Two additional changes are highlighted in 3.6 in relation to the deletion of the JOBSEEKERS ALLOWANCE RECEIPT INDICATOR and OTHER BENEFITS RECEIPT INDICATOR (IMPROVING ACCESS TO PSYCHOLOGICAL THERAPIES) data items that are no longer required, which will reduce burden.

Group / Table	Data Item Name	Item Amend Type	Previous	Addition	Change Reason
IDS004 Employment Status	DISCHARGE DATE (EMPLOYMENT SUPPORT)	Addition	N/A	Required	To track the numbers finishing employment support.
IDS201	APPOINTMENT TYPE (IMPROVING ACCESS TO PSYCHOLOGICAL THERAPIES)	Amendment	01 - Assessment 02 - Treatment 03 - Assessment and treatment 04 - Review only 05 - Review and treatment 06 - Follow-up appointment after treatment end 07 - Other (not listed) 08 - Not Recorded	01 - Assessment 02 - Treatment 03 - Assessment and treatment 04 - Review only 05 - Review and treatment 06 - Follow-up appointment after treatment end 10 - Employment Support 98 - Other (not listed) 99 - Not Recorded	Changes to the value list to ensure the correct recording of employment support activity that takes place post therapy.

3.5. Changes to Mandation Status

The mandation status of the following data items are changed from 'Required' to 'Mandatory'.

3.5.1. Person Birth Date in the IDS001 Master Patient Index Table

Aims: The Person Birth Date is populated in all IDS001 Master Patient Index records.

Benefits: Changing the mandation status from 'Required' to 'Mandatory' will improve data quality by ensuring the submitted data item is populated accordingly. The 'Person Birth Date' is a critical data item to allow appropriate validation checks of other date based data items to be carried out by the landing portal.

Group / Table	Data Item Name	Item Amend Type	Previous	Addition	Change Reason
IDS001 Master Patient Index	PERSON BIRTH DATE	Amendment	Required	Mandatory	To improve data quality

3.5.2. Employment Status Recorded Date in the IDS004 Employment Status Table

Aims: The Employment Status Recorded Date is populated in all IDS004 Employment Status records.

Benefits: Changing the mandation status from 'Required' to 'Mandatory' will improve data quality by ensuring the submitted data item is populated accordingly. The 'Employment Status Recorded Date' is a critical data item to allow appropriate validation checks of IDS004 records to be carried out by the landing portal.

Group / Table	Data Item Name	Item Amend Type	Previous	Addition	Change Reason
IDS004 Employment Status	EMPLOYMENT STATUS RECORDED DATE	Amendment	Required	Mandatory	To improve data quality

3.6. Deletion of data items that are no longer required within the data set

Aim: Reduced burden by removing data items no longer required for national secondary uses.

Benefits: These data items are being retired as they are either no longer required or alternative derived values are already calculated, which are much more robust and useful.

Group / Table	Data Item Name	Item Amend Type	Previous	New	Additional Change Detail
IDS001 Master Patient Index	ORGANISATION IDENTIFIER (RESIDENCE RESPONSIBILITY)	Deletion	N/A	N/A	Has been retired as the derived value is much more robust and useful.
IDS002 GP	ORGANISATION IDENTIFIER (GP PRACTICE RESPONSIBILITY)	Deletion	N/A	N/A	Has been retired as the derived value is much more robust and useful.
IDS004 Employment Status	JOBSEEKERS ALLOWANCE RECEIPT INDICATOR	Deletion	N/A	N/A	This is being replaced by Universal Credit (already collected using UNIVERSAL CREDIT RECEIPT INDICATOR).
IDS004 Employment Status	OTHER BENEFITS RECEIPT INDICATOR (IMPROVING ACCESS TO PSYCHOLOGICAL THERAPIES)	Deletion	N/A	N/A	This data item is too broad. A derived value already exists that is more appropriate.

3.7. Amendments to ensure alignment with the NHS Data Model and Dictionary

Updates to the NHS Data Model and Dictionary routinely occur whenever an information standard is changed. This means that some data items that were accurate at the time of the IAPT v2.0 ISN publication now need updating for consistency with related information standards:

3.7.1. 'Consultation Medium Used in the Care Contact Table

Aim: To align the data set to related information standards.

Benefits: Adopts a new value list that is more appropriate and up to date with modes of communication.

Group / Table	Data Item Name	Item Amend Type	Previous	New	Additional Change Detail
IDS201 Care Contact	CONSULTATION MEDIUM USED	Amendment	CONSULTATION MEDIUM USED	CONSULTATION MECHANISM (MENTAL HEALTH)	Changes to the value list

3.7.2. 'Finding Scheme in Use' in Care Activity, Long Term Health Conditions and Presenting Complaints Tables

Aim: To align the Data Set with related information standards for these items.

Benefits: Differentiates from other data sets that currently use the 'Finding Scheme in Use' data item that still allows the submission of Read 2 or CTV3, which is not possible in IAPT.

Group / Table	Data Item Name	Item Amend Type	Previous	New	Additional change detail
IDS202 Care Activity	FINDING SCHEME IN USE	Amendment	FINDING SCHEME IN USE	FINDING SCHEME IN USE (MENTAL HEALTH)	
IDS602 Long Term Condition	FINDING SCHEME IN USE	Amendment	FINDING SCHEME IN USE	FINDING SCHEME IN USE (MENTAL HEALTH)	
IDS603 Presenting Complaints	FINDING SCHEME IN USE	Amendment	FINDING SCHEME IN USE	FINDING SCHEME IN USE (MENTAL HEALTH)	

3.7.3. 'NHS Number Status Indicator Code' in the Master Patient Index table

Aim: Rename to 'NHS Number Status Indicator Code (Mental Health and Maternity).'

Benefits: To differentiate from other data sets where a wider value list is currently in use. To provides a more focussed value list that makes this data item easier to use.

	Data Item Name	Item Amend Type	Previous	New
IDS001 Master Patient Index	NHS Number Status Indicator Code	Amendment	NHS Number Status Indicator Code	NHS Number Status Indicator Code (Mental Health and Maternity)

3.7.4. 'Onward Referral Reason' in the 'Onward Referral' table

Aim: Renamed to 'Onward Referral Reason (Improving Access to Psychological Therapies)'.

Benefits: Differentiates from other datasets where a wider value list is currently in use. To provides a more focussed value list that makes this data item easier to use.

	Data Item Name	Item Amend Type	Previous	New
IDS105 Onward Referral	ONWARD REFERRAL REASON	Amendment	ONWARD REFERRAL REASON	ONWARD REFERRAL REASON (IMPROVING ACCESS TO PSYCHOLOGICAL THERAPIES)

3.7.5. 'Source of Referral for Mental Health' in the Service or Team Referral Table

Aim: Rename to Source of Referral for IAPT.

Benefits: As MHSDS and IAPT have different value lists, renaming to include IAPT will differentiate between the data sets. Inclusion of the two new codes detailed below will enhance reporting.

Group / Table	Data Item Name	Item Amend Type	Previous	New	Additional Change Detail
IDS101 Referral	SOURCE OF REFERRAL FOR MENTAL HEALTH	Amendment	SOURCE OF REFERRAL FOR MENTAL HEALTH	SOURCE OF REFERRAL FOR IMPROVING ACCESS TO PSYCHOLOGICAL THERAPIES	Introduction of 2 new values: N4 – Other Improving Access to Psychological Therapies Service Q1 – Mental Health Drop In Service

3.7.6. New pilot data item 'Ethnic Category 2021' in the Master Patient Index Table

Aim: To introduce a pilot item to facilitate future reporting in relation to the 2021 Census.

Benefits: The pilot placeholder data item will ensure system readiness for when the 2021 Census categories have been adopted. This has already been added as a pilot data item in MHSDS v5.0.

Group / Table	Data Item Name	Item Amend Type	Previous	New
IDS001 Master Patient Index	ETHNIC CATEGORY 2021	Addition	N/A	N/A

As detailed in this section, many of the changes ensure closer alignment with the MHSDS, which enables a possible future merger of the IAPT Data Set into MHSDS.

4. Maintenance updates

The Data Set Development Service (DSDS) maintain a requirements tracker to record ongoing future requests for changes to the data set. These will be regularly reviewed and shared with the Senior Responsible Owner (SRO) for potential inclusion in future updates to the data set.

5. Change control

The *TOS* fully defines the individual changes applied to the data set, with each change logged in the 'Change Control' tab. This *Change Specification* therefore represents a summary of changes included in IAPT v2.1 which should be read in conjunction with the 'Change Control' tab in the *TOS* to fully understand the changes to the data set.

N.B. The latest version of the ETOS is published with other supporting documents on the NHS Digital [IAPT Data Set webpage](#)ⁱⁱⁱ.

Endnotes

ⁱ <https://digital.nhs.uk/data-and-information/data-collections-and-data-sets>

ⁱⁱ <https://digital.nhs.uk/data-and-information/information-standards/information-standards-and-data-collections-including-extractions/publications-and-notifications/standards-and-collections>

ⁱⁱⁱ <https://digital.nhs.uk/data-and-information/data-collections-and-data-sets/data-sets/improving-access-to-psychological-therapies-data-set>