

## Health and Social Care Information Centre

### NHS Data Model and Dictionary Service

**Type:** Change Request  
**Reference:** 1565  
**Version No:** 1.0  
**Subject:** Retirement of Diabetes Summary Core Data Set  
**Effective Date:** Immediate  
**Reason for Change:** Retirement of Data Set  
**Publication Date:** 19 July 2016

#### Background:

The Information Standards Notice [ISB 1561](#) published in July 2016 confirmed the retirement of the Diabetes Summary Core Data Set.

This Change Request retires the Diabetes Summary Core Data Set and associated definitions not used in any other data set from the NHS Data Model and Dictionary.

To view a demonstration on "How to Read an NHS Data Model and Dictionary Change Request", visit the NHS Data Model and Dictionary help pages at: [http://www.datadictionary.nhs.uk/Flash\\_Files/changerequest.htm](http://www.datadictionary.nhs.uk/Flash_Files/changerequest.htm).

Note: if the web page does not open, please copy the link and paste into the web browser.

#### Summary of changes:

##### **Diagrams**

<a href="#">CHILDREN AND YOUNG PEOPLE'S HEALTH SERVICES DIAGRAM</a>	Changed Diagram
<a href="#">COMMUNITY INFORMATION DIAGRAM</a>	Changed Diagram
<a href="#">NATIONAL JOINT REGISTRY DIAGRAM</a>	Changed Diagram
<a href="#">NATIONAL RENAL DIAGRAM</a>	Changed Diagram
<a href="#">PERSON DIAGRAM</a>	Changed Diagram

##### **Data Set**

<a href="#">DIABETES DATA SET (SUMMARY CORE) (RETIRED)</a> renamed from <a href="#">DIABETES DATA SET (SUMMARY CORE)</a>	Changed Description, Name, status to Retired
--------------------------------------------------------------------------------------------------------------------------	----------------------------------------------

##### **Supporting Information**

<a href="#">CLINICAL DATA SETS MENU</a>	Changed Description
<a href="#">DIABETES CARE ISSUE (RETIRED)</a> renamed from <a href="#">DIABETES CARE ISSUE</a>	Changed Description, Name, status to Retired
<a href="#">DIABETES DATA SET (SUMMARY CORE) OVERVIEW (RETIRED)</a> renamed from <a href="#">DIABETES DATA SET (SUMMARY CORE) OVERVIEW</a>	Changed Description, Name, status to Retired
<a href="#">URINARY ALBUMIN LEVEL (RETIRED)</a> renamed from <a href="#">URINARY ALBUMIN LEVEL</a>	Changed Description, Name, status to Retired

##### **Class Definitions**

<a href="#">CARE ACTIVITY</a>	Changed Relationships
<a href="#">CARE ISSUE (RETIRED)</a> renamed from <a href="#">CARE ISSUE</a>	Changed Attributes, Description, Name, status to Retired
<a href="#">CLINICAL INVESTIGATION RESULT ITEM</a>	Changed Attributes
<a href="#">DIABETES ROUTINE REVIEW RESULT (RETIRED)</a> renamed from <a href="#">DIABETES ROUTINE REVIEW RESULT</a>	Changed Attributes, Description, Name, status to Retired, Supertype

## PERSON PROPERTY

Changed Attributes, Description, Relationships

### **Attribute Definitions**

ALBUMINURIA STAGE (RETIRED) renamed from ALBUMINURIA STAGE

Changed Description, Name, status to Retired

CARE ISSUE END DATE (RETIRED) renamed from CARE ISSUE END DATE

Changed Description, Name, status to Retired

CARE ISSUE IDENTIFIER (RETIRED) renamed from CARE ISSUE IDENTIFIER

Changed Description, Name, status to Retired

CARE ISSUE START DATE (RETIRED) renamed from CARE ISSUE START DATE

Changed Description, Name, status to Retired

CLINICAL INTERVENTION TYPE

Changed Description

CLINICAL INVESTIGATION RESULT ITEM TYPE

Changed Description

DIABETES ROUTINE REVIEW CODE (RETIRED) renamed from DIABETES ROUTINE REVIEW CODE

Changed Description, Name, status to Retired

DIABETES ROUTINE REVIEW TYPE (RETIRED) renamed from DIABETES ROUTINE REVIEW TYPE

Changed Description, Name, status to Retired

DIABETES TYPE (RETIRED) renamed from DIABETES TYPE

Changed Description, Name, status to Retired

### **Data Elements**

ALBUMINURIA STAGE (RETIRED) renamed from ALBUMINURIA STAGE

Changed Description, Name, status to Retired, linked Attribute

BIRTH DATE (RETIRED) renamed from BIRTH DATE

Changed Description, Name, status to Retired

BODY MASS INDEX

Changed Description

DIABETES ROUTINE REVIEW (EYE) (RETIRED) renamed from DIABETES ROUTINE REVIEW (EYE)

Changed Description, Name, status to Retired, linked Attribute

DIABETES ROUTINE REVIEW (FOOT) (RETIRED) renamed from DIABETES ROUTINE REVIEW (FOOT)

Changed Description, Name, status to Retired, linked Attribute

DIABETES TYPE (RETIRED) renamed from DIABETES TYPE

Changed Description, Name, status to Retired, linked Attribute

DIAGNOSTIC CODING (DIABETES RELEVANT ICD-10) (RETIRED) renamed from DIAGNOSTIC CODING (DIABETES RELEVANT ICD-10)

Changed Description, Name, status to Retired, linked Attribute

DIAGNOSTIC CODING (DIABETES RELEVANT READ CODES) (RETIRED) renamed from DIAGNOSTIC CODING (DIABETES RELEVANT READ CODES)

Changed Description, Name, status to Retired, linked Attribute

OBSERVATION DATE (BMI) (RETIRED) renamed from OBSERVATION DATE (BMI)

Changed Description, Name, status to Retired, linked Attribute

OBSERVATION DATE (DIABETES RELEVANT DIAGNOSIS) (RETIRED) renamed from OBSERVATION DATE (DIABETES RELEVANT DIAGNOSIS)

Changed Description, Name, status to Retired, linked Attribute

OBSERVATION DATE (EYE EXAMINATION) (RETIRED) renamed from OBSERVATION DATE (EYE EXAMINATION)

Changed Description, Name, status to Retired, linked Attribute

OBSERVATION DATE (FOOT EXAMINATION) (RETIRED) renamed from OBSERVATION DATE (FOOT EXAMINATION)

Changed Description, Name, status to Retired, linked Attribute

OBSERVATION DATE (SERUM CHOLESTEROL LEVEL) (RETIRED) renamed from OBSERVATION DATE (SERUM CHOLESTEROL LEVEL)

Changed Description, Name, status to Retired, linked Attribute

OBSERVATION DATE (SERUM CREATININE LEVEL) (RETIRED) renamed from OBSERVATION DATE (SERUM CREATININE LEVEL)

Changed Description, Name, status to Retired, linked Attribute

OBSERVATION DATE (URINARY ALBUMIN LEVEL) (RETIRED) renamed from OBSERVATION DATE (URINARY ALBUMIN LEVEL)

Changed Description, Name, status to Retired, linked Attribute

PERSON BIRTH DATE

Changed Description

PERSON OBSERVATION (BMI) (RETIRED) renamed from PERSON OBSERVATION (BMI)

Changed Description, Name, status to Retired

PERSON OBSERVATION (HBA1C LEVEL) (RETIRED) renamed from PERSON OBSERVATION (HBA1C LEVEL)

Changed Description, Name, status to Retired, linked Attribute

PERSON OBSERVATION (SERUM CHOLESTEROL LEVEL) (RETIRED) renamed from PERSON OBSERVATION (SERUM CHOLESTEROL LEVEL)

Changed Description, Name, status to Retired, linked Attribute

<a href="#">PERSON OBSERVATION (SERUM CREATININE LEVEL) (RETIRED)</a> renamed from <a href="#">PERSON OBSERVATION (SERUM CREATININE LEVEL)</a>	Changed Description, Name, status to Retired, linked Attribute
<a href="#">PERSON OBSERVATION (URINARY ALBUMIN LEVEL) (RETIRED)</a> renamed from <a href="#">PERSON OBSERVATION (URINARY ALBUMIN LEVEL)</a>	Changed Description, Name, status to Retired, linked Attribute
<a href="#">PROCEDURE CODING (DIABETES RELEVANT OPCS-4) (RETIRED)</a> renamed from <a href="#">PROCEDURE CODING (DIABETES RELEVANT OPCS-4)</a>	Changed Description, Name, status to Retired, linked Attribute
<a href="#">PROCEDURE CODING (DIABETES RELEVANT READ CODES) (RETIRED)</a> renamed from <a href="#">PROCEDURE CODING (DIABETES RELEVANT READ CODES)</a>	Changed Description, Name, status to Retired, linked Attribute
<a href="#">SEX (RETIRED)</a> renamed from <a href="#">SEX</a>	Changed Description, Name, status to Retired, linked Attribute
<a href="#">SMOKING STATUS (RETIRED)</a> renamed from <a href="#">SMOKING STATUS</a>	Changed Description, Name, status to Retired, linked Attribute
<a href="#">SMOKING STATUS CODE</a>	Changed Description
<a href="#">URINARY ALBUMIN LEVEL TESTING METHOD (RETIRED)</a> renamed from <a href="#">URINARY ALBUMIN LEVEL TESTING METHOD</a>	Changed Description, Name, status to Retired

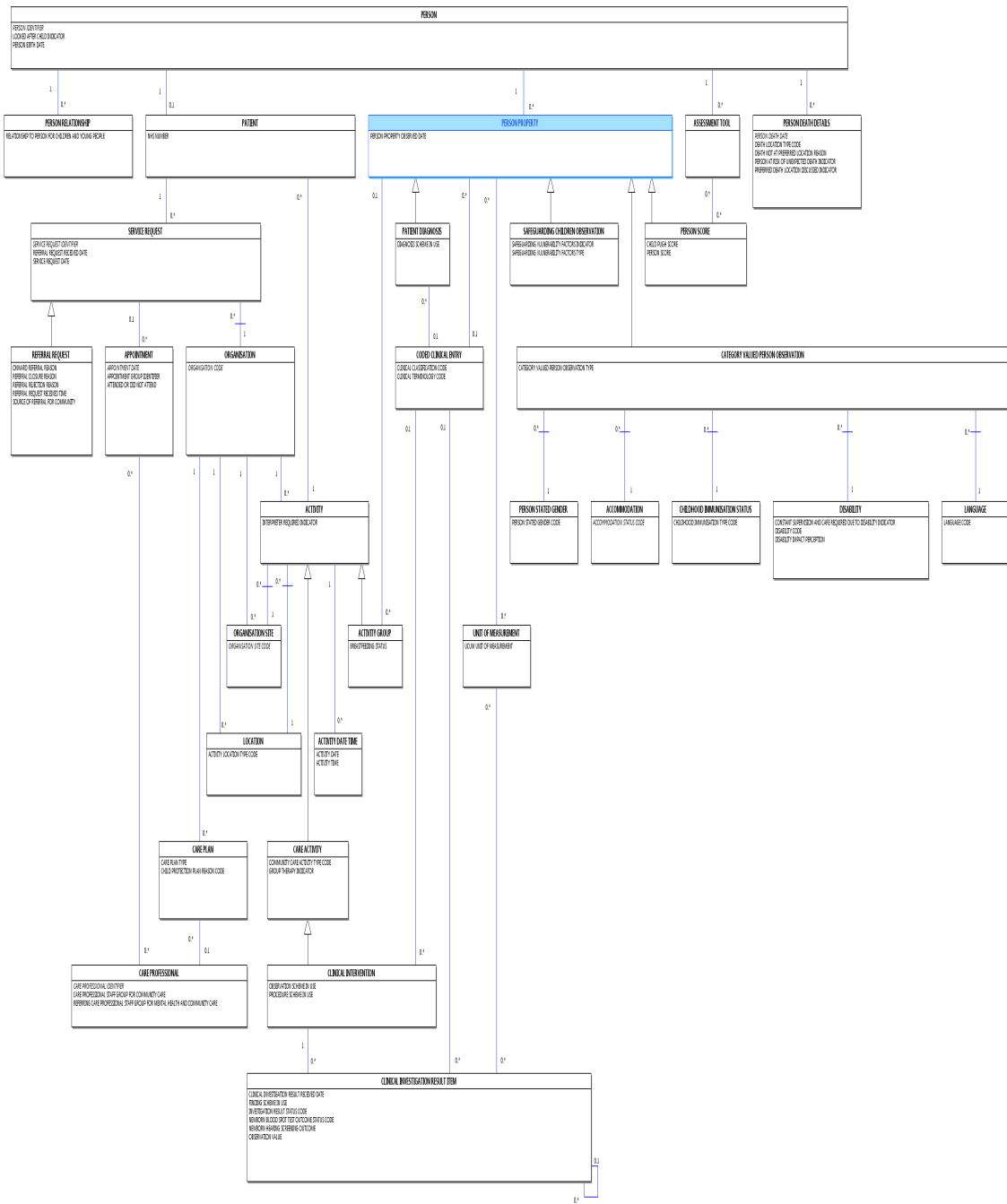
**Date:** 19 July 2016

**Sponsor:** Peter Counter, Chief Technology Officer, Health and Social Care Information Centre

**Note:** New text is shown with a blue background. Deleted text is crossed out. Retired text is shown in grey. Within the Diagrams deleted classes and relationships are red, changed items are blue and new items are green.

# CHILDREN AND YOUNG PEOPLE'S HEALTH SERVICES DIAGRAM

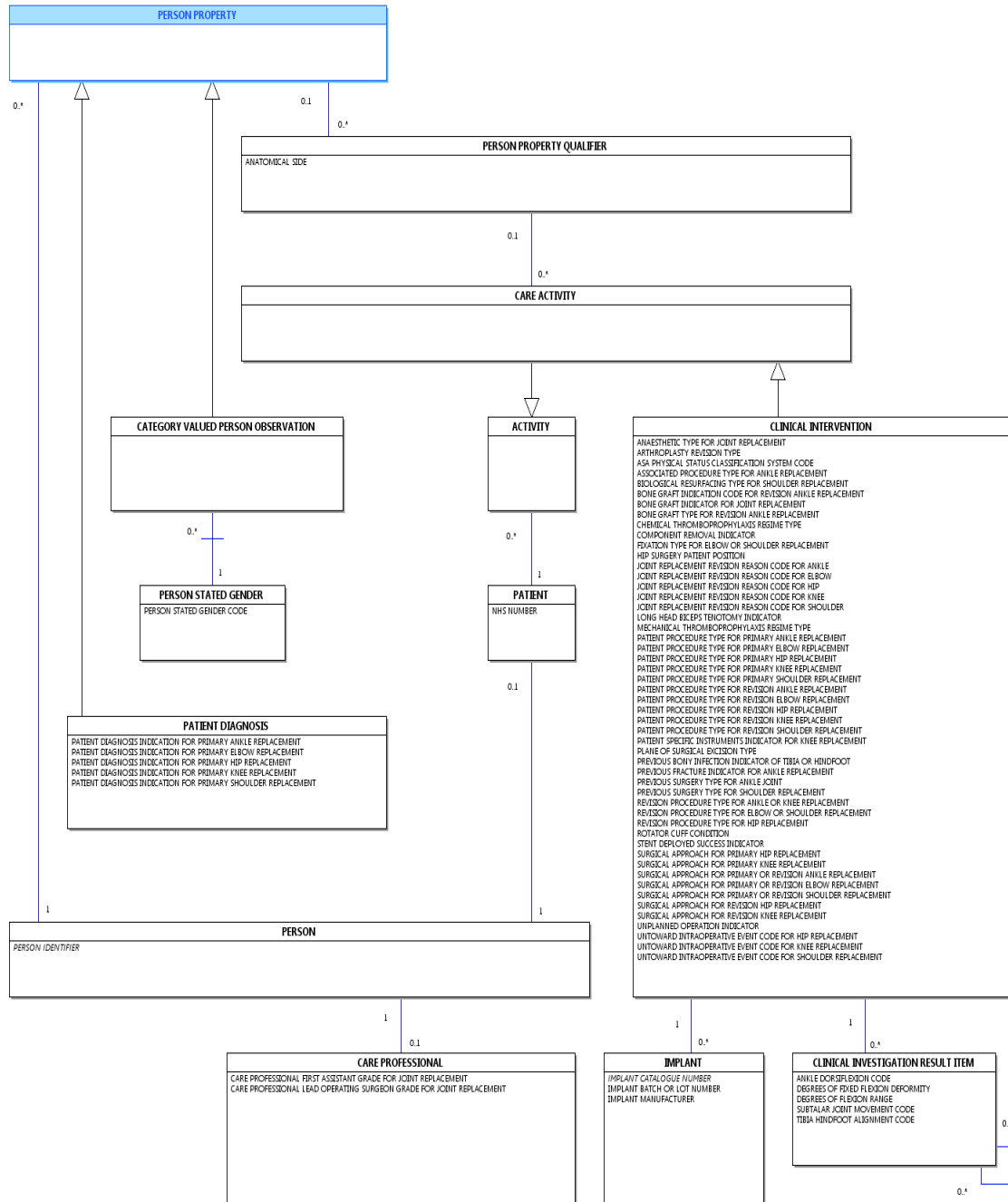
## Change to Diagram: Changed Diagram





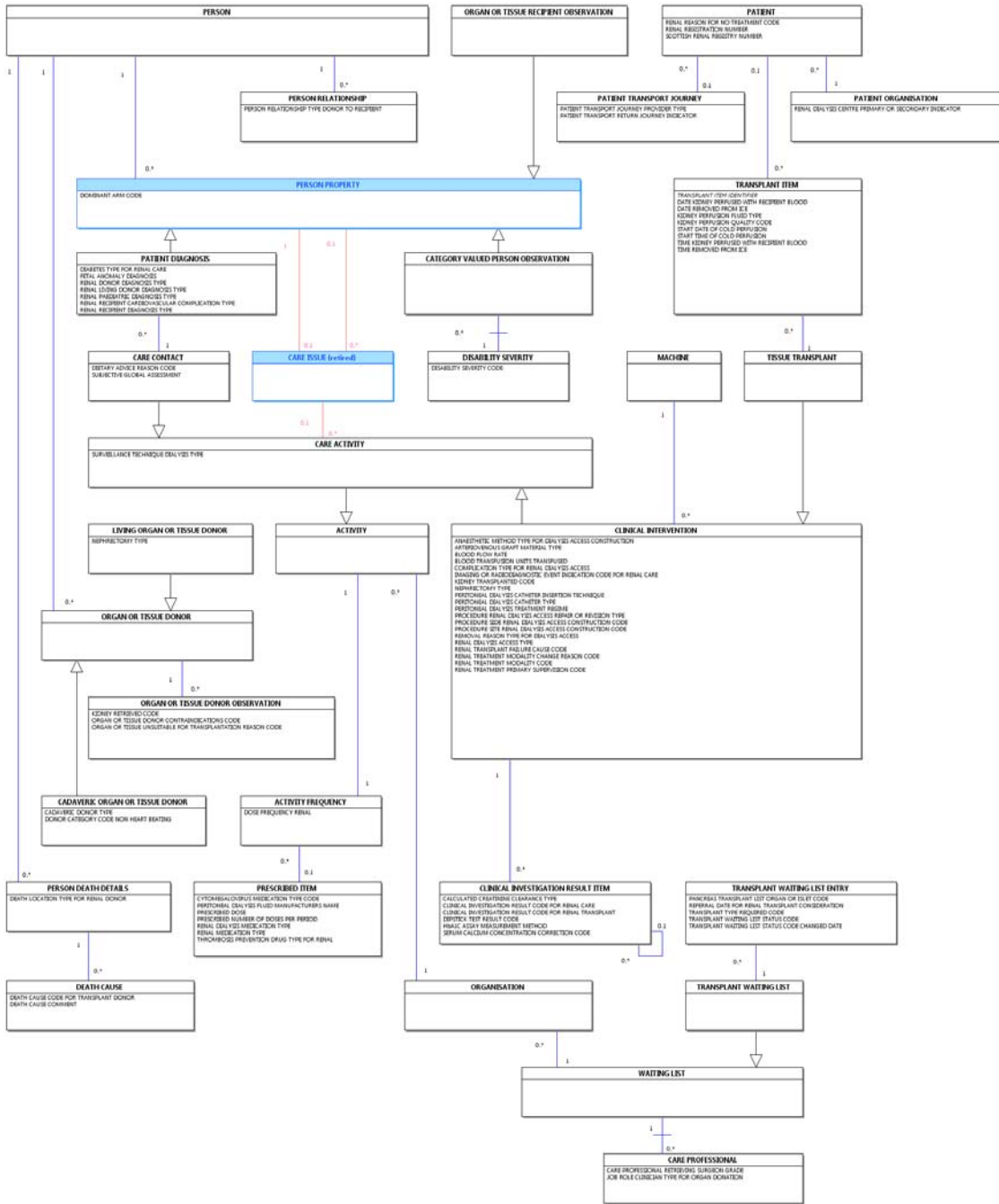
**NATIONAL JOINT REGISTRY DIAGRAM**

Change to Diagram: Changed Diagram



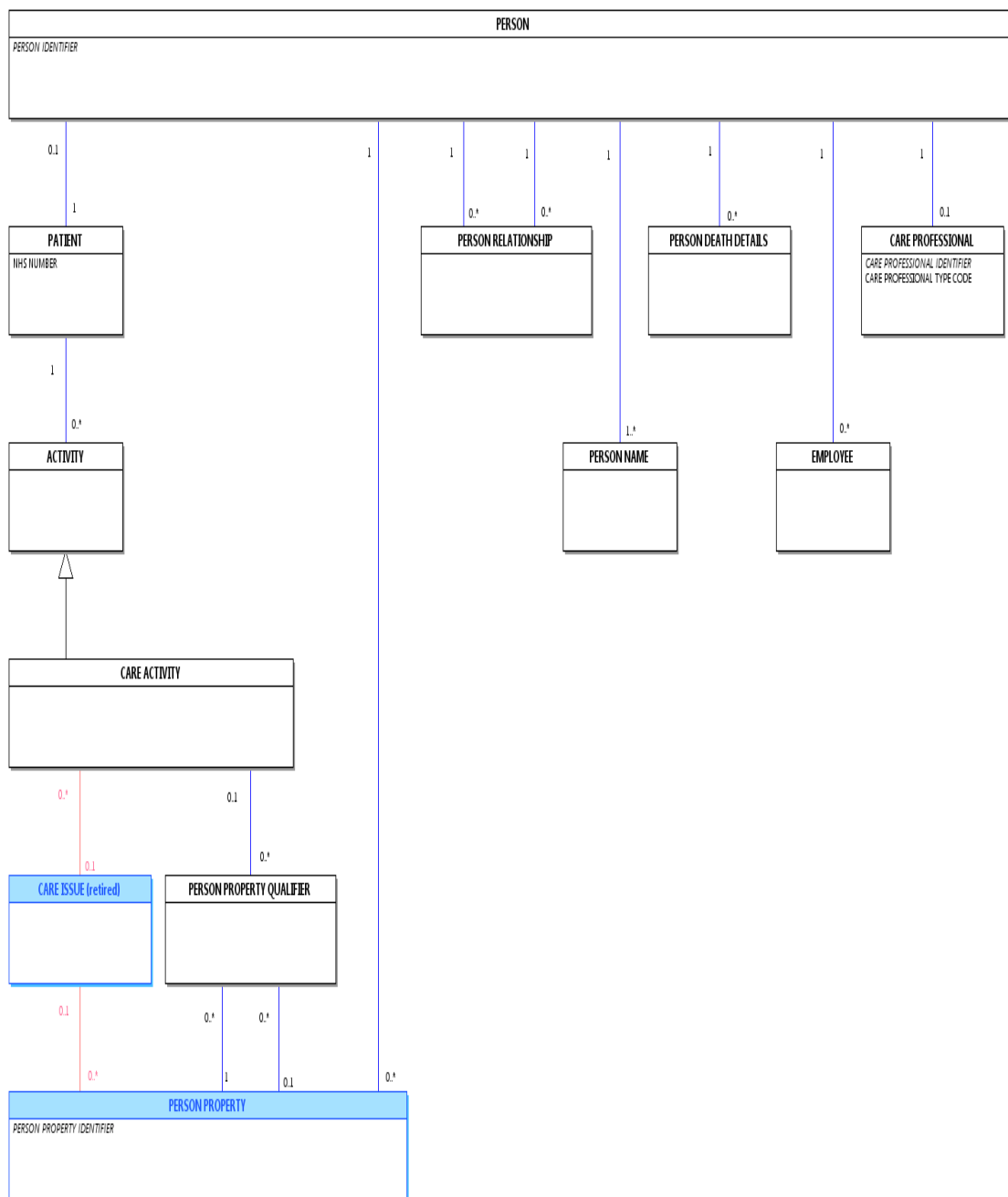
**NATIONAL RENAL DIAGRAM**

Change to Diagram: Changed Diagram



**PERSON DIAGRAM**

Change to Diagram: Changed Diagram



**DIABETES DATA SET (SUMMARY CORE) (RETIRED)** renamed from **DIABETES DATA SET (SUMMARY CORE)**

Change to Data Set: Changed Description, Name, status to Retired

~~This data set has been subsumed within the Diabetes Continuing Care Reference data set (DCCR).~~ This item has been retired from the NHS Data Model and Dictionary. For further information, see the [Health and Social Care Information Centre website](#).

~~Diabetes Data Set (Summary Core) Overview~~ The last live version of this item is available in the March 2016 release of the NHS Data Model and Dictionary.

The [Diabetes Data Set \(Summary Core\)](#) is developed to ensure people with diabetes have up to date records of their risk factors, current management, treatment target achievements and arrangements and outcomes of regular surveillance for complications, to help them monitor their care and make informed choices about their management. **Access to this version can be obtained by emailing [information.standards@hscic.gov.uk](mailto:information.standards@hscic.gov.uk) with "NHS Data Model and Dictionary - Archive Request" in the email subject line.**

The [Diabetes Data Set \(Summary Core\)](#) will also ensure that when people with diabetes meet health care professionals the consultation is fully informed by comprehensive, up to date and accurate information.

Data Set Data Elements	
<b>DEMOGRAPHICS</b>	<b>Notes:</b>
<a href="#">NHS_NUMBER</a>	
<a href="#">BIRTH_DATE</a>	
<a href="#">POSTCODE_OF_USUAL_ADDRESS</a>	
<a href="#">SEX</a>	
<a href="#">PERSON_DEATH_DATE</a>	
<b>DIAGNOSIS</b>	<b>Notes:</b>
<a href="#">DIAGNOSIS_DATE_(DIABETES)</a>	
<a href="#">DIABETES_TYPE</a>	
<b>PATIENT REVIEW DATA</b>	<b>Notes:</b>
<b>Clinical Observation Data</b>	
<a href="#">PERSON_OBSERVATION_(BMI)</a>	
<a href="#">OBSERVATION_DATE_(BMI)</a>	
<a href="#">SYSTOLIC_BLOOD_PRESSURE</a>	Not mandatory for children <12 years old
<a href="#">OBSERVATION_DATE_(BLOOD_PRESSURE)</a>	
<a href="#">DIASTOLIC_BLOOD_PRESSURE</a>	Not mandatory for children <12 years old
<a href="#">OBSERVATION_DATE_(BLOOD_PRESSURE)</a>	
<b>Laboratory Data</b>	
<a href="#">PERSON_OBSERVATION_(HbA1c_LEVEL)</a>	
<a href="#">OBSERVATION_DATE_(HbA1c_LEVEL)</a>	
<a href="#">PERSON_OBSERVATION_(SERUM_CREATININE_LEVEL)</a>	
<a href="#">OBSERVATION_DATE_(SERUM_CREATININE_LEVEL)</a>	
<a href="#">PERSON_OBSERVATION_(URINARY_ALBUMIN_LEVEL)</a>	Not mandatory for children <12 years old
<a href="#">URINARY_ALBUMIN_LEVEL_TESTING_METHOD</a>	
<a href="#">ALBUMINURIA_STAGE</a>	
<a href="#">OBSERVATION_DATE_(URINARY_ALBUMIN_LEVEL)</a>	
<a href="#">PERSON_OBSERVATION_(SERUM_CHOLESTEROL_LEVEL)</a>	Not mandatory for children <12 years old
<a href="#">OBSERVATION_DATE_(SERUM_CHOLESTEROL_LEVEL)</a>	
<b>Eye Examination</b>	
<a href="#">DIABETES_ROUTINE_REVIEW_(EYE)</a>	
<a href="#">OBSERVATION_DATE_(EYE_EXAMINATION)</a>	Not mandatory for children <12 years old
<b>Foot Examination</b>	
<a href="#">DIABETES_ROUTINE_REVIEW_(FOOT)</a>	

<a href="#">OBSERVATION DATE (FOOT EXAMINATION)</a>	
<b>Smoking Review</b>	
<a href="#">SMOKING STATUS</a>	Not mandatory for children <12 years old
<a href="#">OBSERVATION DATE (SMOKING STATUS)</a>	
<b>PERSONAL MEDICAL HISTORY</b>	<b>Notes:</b>
<i>The following occur as a recurring group:</i>	
<a href="#">PROCEDURE CODING (DIABETES RELEVANT OPCS 4)</a>	
<a href="#">OBSERVATION DATE (DIABETES RELEVANT DIAGNOSIS)</a>	
<i>The following occur as a recurring group:</i>	
<a href="#">DIAGNOSTIC CODING (DIABETES RELEVANT READ CODES)</a>	
<a href="#">OBSERVATION DATE (DIABETES RELEVANT DIAGNOSIS)</a>	
<i>The following occur as a recurring group:</i>	
<a href="#">PROCEDURE CODING (DIABETES RELEVANT OPCS 4)</a>	
<a href="#">PROCEDURE DATE</a>	
<i>The following occur as a recurring group:</i>	
<a href="#">PROCEDURE CODING (DIABETES RELEVANT READ CODES)</a>	
<a href="#">PROCEDURE DATE</a>	

---

**DIABETES DATA SET (SUMMARY CORE) (RETIRED)\_ renamed from DIABETES DATA SET (SUMMARY CORE)**

---

Change to Data Set: Changed Description, Name, status to Retired

- Changed Description
- Changed Name from Data\_Dictionary.Messages.Clinical\_Data\_Sets.Data\_Sets.Diabetes\_Data\_Set\_(Summary\_Core) to Retired.Data\_Dictionary.Messages.Clinical\_Data\_Sets.Diabetes\_Data\_Set\_(Summary\_Core)
- Retired Diabetes Data Set (Summary Core)

---

**CLINICAL DATA SETS MENU**

---

Change to Supporting Information: Changed Description

- [Message Documentation](#)
- [Cancer Outcomes and Services](#)
- [Children and Young Peoples Health Services](#)
- [Chlamydia Testing Activity](#)
- [Community Information](#)
- [Diabetes \(Summary Core\)](#)
- [Diagnostic Imaging](#)
- [Female Genital Mutilation](#)
- [Genitourinary Medicine Clinic Activity](#)
- [HIV and AIDS Reporting](#)
- [Improving Access to Psychological Therapies](#)
- [Maternity Services](#)
- [Mental Health Services](#)
- [National Cancer Waiting Times Monitoring](#)
- [National Neonatal](#)
- [National Renal](#)
- [NHS Health Checks](#)
- [Radiotherapy](#)

- [Sexual and Reproductive Health Activity](#)
- [Systemic Anti-Cancer Therapy](#)

---

**DIABETES CARE ISSUE (RETIRED)\_ renamed from DIABETES CARE ISSUE**

---

Change to Supporting Information: Changed Description, Name, status to Retired

~~Diabetes Care Issue~~ is a ~~CARE ISSUE~~. **This item has been retired from the NHS Data Model and Dictionary.**

~~Diabetes is a chronic and progressive disease that comprises a group of disorders with many different causes, all of which are characterised by a raised blood glucose level. This is the result of a lack of the hormone insulin and/or an inability to respond to insulin. Insulin in the blood, produced by the pancreas, is the hormone which ensures that glucose (sugar) obtained from food can be used by the body. There are two main types of diabetes – Type 1 diabetes and Type 2 diabetes.~~ **The last live version of this item is available in the March 2016 release of the NHS Data Model and Dictionary.**

**Access to this version can be obtained by emailing [information.standards@hscic.gov.uk](mailto:information.standards@hscic.gov.uk) with "NHS Data Model and Dictionary - Archive Request" in the email subject line.**

---

**DIABETES CARE ISSUE (RETIRED)\_ renamed from DIABETES CARE ISSUE**

---

Change to Supporting Information: Changed Description, Name, status to Retired

- Changed Description
- Changed Name from Data\_Dictionary.NHS\_Business\_Definitions.D.Diabetes\_Care\_Issue to Retired.Data\_Dictionary.NHS\_Business\_Definitions.D.Diabetes\_Care\_Issue
- Retired Diabetes Care Issue

---

**DIABETES DATA SET (SUMMARY CORE) OVERVIEW (RETIRED)\_ renamed from DIABETES DATA SET (SUMMARY CORE) OVERVIEW**

---

Change to Supporting Information: Changed Description, Name, status to Retired

~~This data set has been subsumed within the Diabetes Continuing Care Reference data set (DCCR).~~ **This item has been retired from the NHS Data Model and Dictionary.** ~~For further information, see the [Health and Social Care Information Centre website](#).~~

~~Demographics~~ **The last live version of this item is available in the March 2016 release of the NHS Data Model and Dictionary.**

~~The demographics section contains demographic items necessary to ensure accurate and trouble free liaison between the care provider and the user. All demographic data items will conform to existing national standards.~~ **Access to this version can be obtained by emailing [information.standards@hscic.gov.uk](mailto:information.standards@hscic.gov.uk) with "NHS Data Model and Dictionary - Archive Request" in the email subject line.**

### **Diagnosis**

~~The section contains information relating to the type of diabetes and the date of diagnosis. This information has implications for care and management.~~

### **Patient Review Data**

~~These data items act as a record of the regular, routine preventative care reviews that form the core of the 'continuing care' component of the patient journey, together with a record of the high level observations and management decisions that are made at any consultation.~~

### **Patient Medical History**

~~This section contains those health issues and procedures that may have an effect on, or be a consequence of, the diabetic condition and which will be needed by the patient/clinician in order to manage and monitor care safely and effectively. It refers to chronic concurrent conditions, and also to acute complications associated more directly with the diabetic condition.~~

---

#### **DIABETES DATA SET (SUMMARY CORE) OVERVIEW (RETIRED)\_ renamed from DIABETES DATA SET (SUMMARY CORE) OVERVIEW**

---

Change to Supporting Information: Changed Description, Name, status to Retired

- Changed Description
- Changed Name from Data\_Dictionary.Messages.Clinical\_Data\_Sets.Overviews.Diabetes\_Data\_Set\_(Summary\_Core)\_Overview to Retired.Data\_Dictionary.Messages.Clinical\_Data\_Sets.Diabetes\_Data\_Set\_(Summary\_Core)\_Overview
- Retired Diabetes Data Set (Summary Core) Overview

---

#### **URINARY ALBUMIN LEVEL (RETIRED)\_ renamed from URINARY ALBUMIN LEVEL**

---

Change to Supporting Information: Changed Description, Name, status to Retired

[Urinary Albumin Level](#) is a [CLINICAL INVESTIGATION RESULT ITEM](#). **This item has been retired from the NHS Data Model and Dictionary.**

[Urinary Albumin Level](#) is the level of albumin in a urine sample. **The last live version of this item is available in the March 2016 release of the NHS Data Model and Dictionary.**

**Access to this version can be obtained by emailing [information.standards@hscic.gov.uk](mailto:information.standards@hscic.gov.uk) with "NHS Data Model and Dictionary - Archive Request" in the email subject line.**

---

#### **URINARY ALBUMIN LEVEL (RETIRED)\_ renamed from URINARY ALBUMIN LEVEL**

---

Change to Supporting Information: Changed Description, Name, status to Retired

- Changed Description
- Changed Name from Data\_Dictionary.NHS\_Business\_Definitions.U.Urinary\_Albumin\_Level to Retired.Data\_Dictionary.NHS\_Business\_Definitions.U.Urinary\_Albumin\_Level
- Retired Urinary Albumin Level

---

#### **CARE ACTIVITY**

---

Change to Class: Changed Relationships

*Each CARE ACTIVITY*

- may be directed towards one and only one CARE ISSUE
- may be related to one or more PERSON PROPERTY QUALIFIER
- may be the result of one and only one SERVICE REQUEST
- may be resulting in one or more SERVICE REQUEST
- may be for the delivery of one or more TREATMENT FUNCTION

#### CARE ISSUE (RETIRED), renamed from CARE ISSUE

---

Change to Class: Changed Attributes, Description, Name, status to Retired

A ~~PERSON PROPERTY~~ towards which care is directed. It may be a diagnosis, sign, symptom or any other person observation.

The ~~CARE ISSUE~~ provides an association between other ~~PERSON PROPERTIES~~ and ~~CARE ACTIVITIES~~ that are relevant to that particular issue. **This item has been retired from the NHS Data Model and Dictionary.**

**The last live version of this item is available in the March 2016 release of the NHS Data Model and Dictionary.**

**Access to this version can be obtained by emailing [information.standards@hscic.gov.uk](mailto:information.standards@hscic.gov.uk) with "NHS Data Model and Dictionary - Archive Request" in the email subject line.**

---

#### CARE ISSUE (RETIRED), renamed from CARE ISSUE

---

Change to Class: Changed Attributes, Description, Name, status to Retired

*Attributes of this Class are:*

K CARE ISSUE IDENTIFIER  
CARE ISSUE END DATE  
CARE ISSUE START DATE  
CLINICAL SIGN OBSERVED AT SAMPLE COLLECTION  
DIABETES TYPE

*This class has no attributes.*

---

#### CARE ISSUE (RETIRED), renamed from CARE ISSUE

---

Change to Class: Changed Attributes, Description, Name, status to Retired

- Changed Attributes
  - Changed Description
  - Changed Name from Data\_Dictionary.Classes.C.CARE\_ISSUE to Retired.Data\_Dictionary.Classes.C.CARE\_ISSUE
  - Retired CARE ISSUE
- 

#### CLINICAL INVESTIGATION RESULT ITEM

---

Change to Class: Changed Attributes

*Attributes of this Class are:*

K INVESTIGATION RESULT DATE  
K INVESTIGATION RESULT TIME  
ABNORMALITY DETECTED INDICATOR  
ALBUMINURIA STAGE  
ALK 1 STATUS  
ANKLE DORSIFLEXION CODE  
ANKLE PLANTARFLEXION CODE  
ARITHMETIC COMPARATOR  
BIOPSY REFERRAL OUTCOME  
BREAST BIOPSY REFERRAL OUTCOME  
BREAST CANCER HISTOLOGICAL TYPE  
BREAST SCREENING MAMMOGRAPHY OUTCOME CODE

CALCULATED CREATININE CLEARANCE TYPE  
CANCER VASCULAR OR LYMPHATIC INVASION  
CENTRAL TONE STATUS  
CERVICAL GLANDULAR INTRAEPITHELIAL NEOPLASIA PRESENCE AND GRADE  
CERVICAL NODE STATUS  
CERVICAL SMEAR EXAMINED DATE  
CHLAMYDIA TEST RESULT  
CLINICAL ASSESSMENT RESULT CODE FOR BREAST CANCER  
CLINICAL INVESTIGATION ITEM TYPE  
CLINICAL INVESTIGATION ITEM UNIT OF MEASURE  
CLINICAL INVESTIGATION RESULT CODE FOR RENAL CARE  
CLINICAL INVESTIGATION RESULT CODE FOR RENAL TRANSPLANT  
CLINICAL INVESTIGATION RESULT RECEIVED DATE  
CLINICAL INVESTIGATION RESULT VALUE  
CONDITION SEEN IN ABDOMEN DURING XRAY  
CYSTIC PERIVENTRICULAR LEUKOMALACIA OBSERVED DURING CRANIAL ULTRASOUND SCAN INDICATOR  
CYTOGENETIC ANALYSIS CODE  
CYTOGENETIC PRESENCE TYPE FOR RHABDOMYOSARCOMA  
CYTOGENETIC RISK CODE  
CYTOLOGY RESULT TYPE  
CYTOLOGY SMEAR REASON  
DEGREES OF FIXED FLEXION DEFORMITY  
DEGREES OF FLEXION RANGE  
DETRUSOR MUSCLE PRESENCE INDICATION CODE  
DEVIATING RESULT INDICATOR  
DIPSTICK TEST RESULT CODE  
EPIDERMAL GROWTH FACTOR RECEPTOR MUTATIONAL STATUS  
EXCISION MARGIN INDICATION CODE  
FINDING SCHEME IN USE  
GENETIC CONFIRMATION INDICATOR  
GRADE OF DIFFERENTIATION  
HAEMOGLOBINOPATHY INVESTIGATION RESULT CODE FOR NATIONAL NEONATAL DATA SET  
HbA1C ASSAY MEASUREMENT METHOD  
HEPATOMEGALY INDICATOR  
HORMONE EXPRESSION TYPE  
INTRAVENTRICULAR HAEMORRHAGE GRADE  
INVASIVE CANCER SPECIAL TYPE INDICATOR  
INVESTIGATION EXAMINATION RESULT CODE  
INVESTIGATION HAEMOGLOBINOPATHY RESULT CODE  
INVESTIGATION RESULT STATUS CODE  
INVESTIGATION RESULT TEXT  
INVESTIGATION RISK RATIO RESULT CODE  
INVESTIGATION RUBELLA RESULT INDICATOR  
INVESTIGATION SENSITISED RESULT INDICATOR  
KARYOTYPE TEST OUTCOME  
LACTATE DEHYDROGENASE LEVEL  
LYMPH NODE STATUS  
MAMMOGRAM RESULT CODE  
MEASURED GLOMERULAR FILTRATION RATE TYPE CODE  
METASTASIS EXTENT CODE  
NEWBORN BLOOD SPOT TEST OUTCOME STATUS CODE  
NEWBORN HEARING AUDIOLOGY OUTCOME  
NEWBORN HEARING SCREENING OUTCOME  
NUMBER OF FETUSES

NUMERICAL VALUE  
OBSERVATION VALUE  
PATHOLOGICAL RISK CLASSIFICATION CODE AFTER NEPHRECTOMY  
PATHOLOGICAL RISK CLASSIFICATION CODE AFTER PREOPERATIVE CHEMOTHERAPY  
PERSON BLOOD GROUP  
PERSON RHESUS FACTOR  
PHYSIOLOGICAL MEASUREMENT INDICATION CODE FOR ELECTROCARDIOGRAM  
PORENCEPHALIC CYST VISIBLE DURING CRANIAL ULTRASOUND SCAN INDICATOR  
PREOPERATIVE THERAPY RESPONSE TYPE  
RADIOLOGICAL RESULT VERIFIED DATE  
RADIOLOGICAL RESULT VERIFIED TIME  
RESULT ITEM STATUS  
RETINOPATHY OF PREMATURETY CLOCK HOURS MAXIMUM STAGE  
RETINOPATHY OF PREMATURETY MAXIMUM ZONE  
RETINOPATHY OF PREMATURETY PLUS DISEASE STATUS  
RETINOPATHY OF PREMATURETY STAGE  
S CATEGORY CODE  
SERUM CALCIUM CONCENTRATION CORRECTION CODE  
SPECIMEN NATURE  
SPLEEN BELOW COSTAL MARGIN  
SPLENOMEGALY INDICATOR  
SUBTALAR JOINT MOVEMENT CODE  
TIBIA HINDFOOT ALIGNMENT CODE  
TUMOUR NECROSIS  
ULTRASOUND RESULT CODE FOR BREAST CANCER  
VENTRICULAR DILATION DIAGNOSED DURING CRANIAL ULTRASOUND SCAN INDICATOR

---

**DIABETES ROUTINE REVIEW RESULT (RETIRED)** renamed from **DIABETES ROUTINE REVIEW RESULT**

---

Change to Class: Changed Attributes, Description, Name, status to Retired, Supertype

A subtype of [PERSON\\_PROPERTY](#). **This item has been retired from the NHS Data Model and Dictionary.**

A routine review carried out for all young people and adults with diabetes, to provide regular surveillance for the long term complications of diabetes. **The last live version of this item is available in the March 2016 release of the NHS Data Model and Dictionary.**

**Access to this version can be obtained by emailing [information.standards@hscic.gov.uk](mailto:information.standards@hscic.gov.uk) with "NHS Data Model and Dictionary - Archive Request" in the email subject line.**

---

**DIABETES ROUTINE REVIEW RESULT (RETIRED)** renamed from **DIABETES ROUTINE REVIEW RESULT**

---

Change to Class: Changed Attributes, Description, Name, status to Retired, Supertype

~~Attributes of this Class are:~~

~~DIABETES ROUTINE REVIEW CODE  
DIABETES ROUTINE REVIEW TYPE~~

**This class has no attributes.**

---

**DIABETES ROUTINE REVIEW RESULT (RETIRED)** renamed from **DIABETES ROUTINE REVIEW RESULT**

---

Change to Class: Changed Attributes, Description, Name, status to Retired, Supertype

- Changed Attributes

- Changed Description
- Changed Name from Data\_Dictionary.Classes.D.DIABETES\_ROUTINE\_REVIEW\_RESULT to Retired.Data\_Dictionary.Classes.D.DIABETES\_ROUTINE\_REVIEW\_RESULT
- Retired DIABETES ROUTINE REVIEW RESULT
- Changed Supertype from Data\_Dictionary.Classes.P.PERSON\_PROPERTY to null

## PERSON PROPERTY

Change to Class: Changed Attributes, Description, Relationships

A [PERSON PROPERTY](#) is a condition or state associated with a [PERSON](#).

[PERSON PROPERTIES](#) are collected as a result of an [ACTIVITY](#).

[PERSON PROPERTIES](#) for a [PATIENT](#) do not include information about a treatment or intervention.

- The [PERSON PROPERTY](#) may be a clinical diagnosis
- The observer of a [PERSON PROPERTY](#) may be a related [PERSON](#) or a [CARE PROFESSIONAL](#)
- [PERSON PROPERTIES](#) may be recorded during, or as a result of, a course of treatment.

Subtypes of [PERSON PROPERTY](#) include:

- [CANCER STAGING](#)
- [CATEGORY VALUED PERSON OBSERVATION](#)
- [DIABETES ROUTINE REVIEW RESULT](#)
- [EDUCATION](#)
- [EDUCATIONAL ASSESSMENT](#)
- [EMPLOYMENT](#)
- [NHS CONTINUING HEALTHCARE](#)
- [NHS FUNDED NURSING CARE](#)
- [ORGAN OR TISSUE DONOR OBSERVATION](#)
- [OTHER PERSON OBSERVATION](#)
- [PATIENT DIAGNOSIS](#)
- [PERSON SCORE](#)
- [SAFEGUARDING CHILDREN OBSERVATION](#)
- [TEXT VALUED PERSON OBSERVATION](#)
- [TOBACCO USAGE](#)

## PERSON PROPERTY

Change to Class: Changed Attributes, Description, Relationships

*Attributes of this Class are:*

K PERSON PROPERTY IDENTIFIER  
 CLINICAL SIGN OBSERVED AT SAMPLE COLLECTION  
 DOMINANT ARM CODE  
 FAMILIAL CANCER SYNDROME INDICATOR  
 FREE PRESCRIPTIONS INDICATOR  
 LAST MENSTRUAL PERIOD DATE  
 PERSON PROPERTY EFFECTIVE DATE  
 PERSON PROPERTY EFFECTIVE END DATE  
 PERSON PROPERTY EFFECTIVE END TIME  
 PERSON PROPERTY EFFECTIVE TIME  
 PERSON PROPERTY OBSERVED DATE  
 PERSON PROPERTY OBSERVED TIME

PERSON PROPERTY RECORDED DATE  
PERSON PROPERTY RECORDED TIME  
PREGNANCY STATUS  
SURGICAL VOICE RESTORATION COMMUNICATION METHOD FOR PLANNED POST OPERATIVE  
SURGICAL VOICE RESTORATION COMMUNICATION METHOD FOR PRIMARY  
YOUNG CARER INDICATOR

---

#### PERSON PROPERTY

---

Change to Class: Changed Attributes, Description, Relationships

*Each PERSON PROPERTY*

- K must be owned by one and only one PERSON
- must be reported by one and only one PERSON
- must be recorded by one and only one PERSON
- must be observed by one and only one PERSON
- may be the context for one and only one ACTIVITY GROUP
- ~~may be required by one and only one CARE ISSUE~~
- ~~may be of relevance to one or more CARE ISSUE~~
- ~~may be acting as one and only one CARE ISSUE~~
- may be classified as one and only one CODED CLINICAL ENTRY
- may be applied for one or more PERSON PROPERTY ASSIGNMENT PERIOD
- may be related to one or more PERSON PROPERTY QUALIFIER
- may be qualified by one or more PERSON PROPERTY QUALIFIER
- may be qualified by one or more UNIT OF MEASUREMENT

---

#### ALBUMINURIA STAGE (RETIRED)\_ renamed from ALBUMINURIA STAGE

---

Change to Attribute: Changed Description, Name, status to Retired

The level of albuminuria in relation to risk of diabetic renal disease and/or cardiovascular disease. Identifies renal and cardiovascular risk for a [PATIENT](#) with diabetes. **This item has been retired from the NHS Data Model and Dictionary.**

~~National Codes:~~ **The last live version of this item is available in the March 2016 release of the NHS Data Model and Dictionary.**

- 01 Normoalbuminuria
- 02 Microalbuminuria
- 03 Macroalbuminuria

**Access to this version can be obtained by emailing [information.standards@hscic.gov.uk](mailto:information.standards@hscic.gov.uk) with "NHS Data Model and Dictionary - Archive Request" in the email subject line.**

---

#### ALBUMINURIA STAGE (RETIRED)\_ renamed from ALBUMINURIA STAGE

---

Change to Attribute: Changed Description, Name, status to Retired

- Changed Description
- Changed Name from Data\_Dictionary.Attributes.A.Age.ALBUMINURIA\_STAGE to Retired.Data\_Dictionary.Attributes.A.ALBUMINURIA\_STAGE
- Retired ALBUMINURIA STAGE

---

#### CARE ISSUE END DATE (RETIRED)\_ renamed from CARE ISSUE END DATE

---

Change to Attribute: Changed Description, Name, status to Retired

The date on which a [PERSON PROPERTY](#) stops acting as a [CARE ISSUE](#). This item has been retired from the NHS Data Model and Dictionary.

The last live version of this item is available in the March 2016 release of the NHS Data Model and Dictionary.

Access to this version can be obtained by emailing [information.standards@hscic.gov.uk](mailto:information.standards@hscic.gov.uk) with "NHS Data Model and Dictionary - Archive Request" in the email subject line.

---

**CARE ISSUE END DATE (RETIRED)\_ renamed from CARE ISSUE END DATE**

Change to Attribute: Changed Description, Name, status to Retired

- Changed Description
- Changed Name from Data\_Dictionary.Attributes.C.Card.CARE\_ISSUE\_END\_DATE to Retired.Data\_Dictionary.Attributes.C.CARE\_ISSUE\_END\_DATE
- Retired CARE ISSUE END DATE

---

**CARE ISSUE IDENTIFIER (RETIRED)\_ renamed from CARE ISSUE IDENTIFIER**

Change to Attribute: Changed Description, Name, status to Retired

Uniquely identifies a [CARE ISSUE](#). This item has been retired from the NHS Data Model and Dictionary.

The last live version of this item is available in the March 2016 release of the NHS Data Model and Dictionary.

Access to this version can be obtained by emailing [information.standards@hscic.gov.uk](mailto:information.standards@hscic.gov.uk) with "NHS Data Model and Dictionary - Archive Request" in the email subject line.

---

**CARE ISSUE IDENTIFIER (RETIRED)\_ renamed from CARE ISSUE IDENTIFIER**

Change to Attribute: Changed Description, Name, status to Retired

- Changed Description
- Changed Name from Data\_Dictionary.Attributes.C.Card.CARE\_ISSUE\_IDENTIFIER to Retired.Data\_Dictionary.Attributes.C.CARE\_ISSUE\_IDENTIFIER
- Retired CARE ISSUE IDENTIFIER

---

**CARE ISSUE START DATE (RETIRED)\_ renamed from CARE ISSUE START DATE**

Change to Attribute: Changed Description, Name, status to Retired

The date on which a [PERSON PROPERTY](#) starts to act as a [CARE ISSUE](#). This item has been retired from the NHS Data Model and Dictionary.

The last live version of this item is available in the March 2016 release of the NHS Data Model and Dictionary.

Access to this version can be obtained by emailing [information.standards@hscic.gov.uk](mailto:information.standards@hscic.gov.uk) with "NHS Data Model and Dictionary - Archive Request" in the email subject line.

---

**CARE ISSUE START DATE (RETIRED) \_ renamed from CARE ISSUE START DATE**

---

Change to Attribute: Changed Description, Name, status to Retired

- Changed Description
  - Changed Name from Data\_Dictionary.Attributes.C.Card.CARE\_ISSUE\_START\_DATE to Retired.Data\_Dictionary.Attributes.C.CARE\_ISSUE\_START\_DATE
  - Retired CARE ISSUE START DATE
- 

**CLINICAL INTERVENTION TYPE**

---

Change to Attribute: Changed Description

The type of [CLINICAL INTERVENTION](#).

*National Codes:*

- 01 Anaesthetic Service (Retired November 2013)
- 02 [Anti-Cancer Drug Cycle](#)
- 03 Anti-Cancer Drug Fraction (Retired 1 January 2013)
- 04 [Anti-Cancer Drug Programme](#)
- 05 [Anti-Cancer Drug Regimen](#)
- 06 [Brachytherapy Treatment Course](#)
- 07 Contraceptive Service (Retired November 2013)
- 08 Dental Haemorrhage Service (Retired November 2013)
- 09 Dental Treatment (Retired 01 April 2014)
- 10 Drug Dosage and Administration (Retired 1 January 2013)
- 11 [Drug Treatment](#)
- 12 Emergency Treatment Service (Retired November 2013)
- 13 Endocrine Therapy (Retired 1 January 2013)
- 14 [Fraction](#)
- 15 [Primary Hip Replacement Surgery](#)
- 16 [Imaging or Radiodiagnostic Event](#)
- 17 [Immunisation Dose Given](#)
- 18 [Joint Replacement Surgery](#)
- 19 [Primary Knee Replacement Surgery](#)
- 20 [Labour and Delivery](#)
- 21 Lithotripsy Course Attendance (Retired 1 April 2014)
- 22 Maternity Medical Service (Retired November 2013)
- 23 Minor Surgery Procedure (Retired November 2013)
- 24 Pathology Laboratory Investigation (Retired January 2015)
- 25 [Patient Procedure](#)
- 26 [Post Mortem](#)
- 27 [Radiotherapy Treatment Course](#)
- 28 Screening Test (Retired November 2013)
- 29 Teletherapy Treatment Course (Retired 1 April 2014)
- 30 Test Of Immunity (Retired November 2013)
- 31 Therapy After Discharge (Retired July 2012)
- 32 [Thromboprophylaxis Regime](#)
- 33 Unsealed Source Treatment Course (Retired 1 April 2014)
- 34 Vaccination Service (Retired November 2013)
- 35 Vasectomy Performed (Retired November 2013)
- 36 [Clinical Investigation](#)
- 37 [Systemic Anti-Cancer Drug Cycle](#)
- 38 [Systemic Anti-Cancer Drug Programme](#)
- 39 [Systemic Anti-Cancer Drug Regimen](#)
- 40 [Chemotherapy](#)
- 41 [Cytotoxic Chemotherapy](#)

- 42 [Hormone Therapy](#)
- 43 [Immunotherapy](#)
- 44 Diagnostic Imaging (Retired January 2015)
- 45 6 - 8 Week Physical Examination (Retired January 2015)
- 46 Ultrasound Scan In Pregnancy (Retired January 2015)
- 47 Newborn Physical Examination (Retired January 2015)
- 48 [Biological Therapy](#)
- 49 [Brachytherapy](#)
- 50 [Chemoradiotherapy](#)
- 51 [Cryotherapy](#)
- 52 [High Intensity Focused Ultrasound](#)
- 53 [Hyperbaric Oxygen Therapy](#)
- 54 [Laser Treatment](#)
- 55 [Light Therapy](#)
- 56 [Photodynamic Therapy](#)
- 57 [Proton Therapy](#)
- 58 [Psoralen and Ultraviolet A Therapy](#)
- 59 [Radiofrequency Ablation](#)
- 60 [Radioisotope Therapy](#)
- 61 [Radiosurgery](#)
- 62 [Radiotherapy](#)
- 63 [Teletherapy](#)
- 64 Tissue Typing (Retired January 2015)
- 65 [Blood Transfusion](#)
- 66 [Renal Dialysis](#)
- 67 [Antiretroviral Therapy](#)
- 68 [Drug Regimen](#)
- 69 [Ablative Therapy](#)
- 70 [Laparoscopy](#)
- 71 [Primary Ankle Replacement Surgery](#)
- 72 [Revision Ankle Replacement Surgery](#)
- 73 [Primary Elbow Replacement Surgery](#)
- 74 [Revision Elbow Replacement Surgery](#)
- 75 [Revision Hip Replacement Surgery](#)
- 76 [Revision Knee Replacement Surgery](#)
- 77 [Primary Shoulder Replacement Surgery](#)
- 78 [Revision Shoulder Replacement Surgery](#)
- 79 [Oxygen Therapy](#)
- 80 [Therapeutic Hypothermia](#)
- 81 [Parenteral Nutrition](#)
- 82 [Enteral Feeding](#)
- 83 [Radiotherapy Exposure](#)
- 84 [Mental Health Treatment](#)
- 85 [Restrictive Intervention](#)

---

**CLINICAL INVESTIGATION RESULT ITEM TYPE**

---

Change to Attribute: Changed Description

The type of [CLINICAL INVESTIGATION RESULT ITEM](#).

*National Codes:*

- 01 [Birth Length](#)
- 02 [Birth Weight](#)
- 03 [Blood Pressure](#)
- 04 [Body Mass Index](#)

- 05 [Bone Age](#)
- 06 [Breslow Thickness](#)
- 07 [Diastolic Blood Pressure](#)
- 08 [Dry Weight](#)
- 09 [Forced Expiratory Volume in 1 second \(Absolute Amount\)](#)
- 10 [Forced Expiratory Volume in 1 second \(Percentage\)](#)
- 11 [Hand Grip Strength](#)
- 12 [HbA1c](#)
- 13 [Head Circumference](#)
- 14 [Heart Rate](#)
- 15 [Height](#)
- 16 [Hip Measurement](#)
- 17 [Mid Arm Circumference](#)
- 18 [Percentage Weight Loss](#)
- 19 [Serum Cholesterol Level](#)
- 20 [Serum Creatinine Level](#)
- 21 [Systolic Blood Pressure](#)
- 22 [Temperature](#)
- 23 [Urinary Albumin Level](#)
- 23 [Urinary Albumin Level \(Retired July 2016\)](#)
- 24 [Urine Output](#)
- 25 [Waist Measurement](#)
- 26 [Weight](#)
- 27 [Length](#)
- 28 [Respiratory Rate](#)
- 29 [Oxygen Saturation](#)
- 30 [Birth Head Circumference](#)

---

**DIABETES ROUTINE REVIEW CODE (RETIRED)\_ renamed from DIABETES ROUTINE REVIEW CODE**

---

Change to Attribute: Changed Description, Name, status to Retired

A record about the regular [DIABETES ROUTINE REVIEW RESULT](#) for a [PERSON](#) with diabetes.

*National Codes:* **This item has been retired from the NHS Data Model and Dictionary.**

- 01 Carried out
- 02 Not done
- 03 Not necessary

**The last live version of this item is available in the March 2016 release of the NHS Data Model and Dictionary.**

**Access to this version can be obtained by emailing [information.standards@hscic.gov.uk](mailto:information.standards@hscic.gov.uk) with "NHS Data Model and Dictionary - Archive Request" in the email subject line.**

---

**DIABETES ROUTINE REVIEW CODE (RETIRED)\_ renamed from DIABETES ROUTINE REVIEW CODE**

---

Change to Attribute: Changed Description, Name, status to Retired

- Changed Description
  - Changed Name from Data\_Dictionary.Attributes.D.Den.DIABETES\_ROUTINE\_REVIEW\_CODE to Retired.Data\_Dictionary.Attributes.D.DIABETES\_ROUTINE\_REVIEW\_CODE
  - Retired DIABETES ROUTINE REVIEW CODE
-

---

**DIABETES ROUTINE REVIEW TYPE (RETIRED)\_ renamed from DIABETES ROUTINE REVIEW TYPE**

---

Change to Attribute: Changed Description, Name, status to Retired

Identifies the type of regular [DIABETES ROUTINE REVIEW RESULT](#) for a [PERSON](#) with diabetes. **This item has been retired from the NHS Data Model and Dictionary.**

~~National Codes:~~ **The last live version of this item is available in the March 2016 release of the NHS Data Model and Dictionary.**

- ~~01 Eye Examination~~
- ~~02 Foot Examination~~

**Access to this version can be obtained by emailing [information.standards@hscic.gov.uk](mailto:information.standards@hscic.gov.uk) with "NHS Data Model and Dictionary - Archive Request" in the email subject line.**

---

---

**DIABETES ROUTINE REVIEW TYPE (RETIRED)\_ renamed from DIABETES ROUTINE REVIEW TYPE**

---

Change to Attribute: Changed Description, Name, status to Retired

- Changed Description
  - Changed Name from Data\_Dictionary.Attributes.D.Den.DIABETES\_ROUTINE\_REVIEW\_TYPE to Retired.Data\_Dictionary.Attributes.D.DIABETES\_ROUTINE\_REVIEW\_TYPE
  - Retired DIABETES ROUTINE REVIEW TYPE
- 

---

**DIABETES TYPE (RETIRED)\_ renamed from DIABETES TYPE**

---

Change to Attribute: Changed Description, Name, status to Retired

Classifies the type of diabetes experienced by the [PATIENT](#). **This item has been retired from the NHS Data Model and Dictionary.**

~~National Codes:~~ **The last live version of this item is available in the March 2016 release of the NHS Data Model and Dictionary.**

- ~~01 Type 1~~
- ~~02 Type 2~~
- ~~06 MODY~~
- ~~08 Other Specified~~
- ~~99 Not specified~~

'99 - Not Specified' should only be used in the short term and refined to one of the alternative options as soon as possible. **Access to this version can be obtained by emailing [information.standards@hscic.gov.uk](mailto:information.standards@hscic.gov.uk) with "NHS Data Model and Dictionary - Archive Request" in the email subject line.**

---

---

**DIABETES TYPE (RETIRED)\_ renamed from DIABETES TYPE**

---

Change to Attribute: Changed Description, Name, status to Retired

- Changed Description
  - Changed Name from Data\_Dictionary.Attributes.D.Den.DIABETES\_TYPE to Retired.Data\_Dictionary.Attributes.D.DIABETES\_TYPE
  - Retired DIABETES TYPE
- 

---

**ALBUMINURIA STAGE (RETIRED)\_ renamed from ALBUMINURIA STAGE**

---

Change to Data Element: Changed Description, Name, status to Retired, linked Attribute

Format/Length:	n2
National Codes:	See <a href="#">ALBUMINURIA_STAGE</a>
Default Codes:	

**Notes:**

~~[ALBUMINURIA\\_STAGE](#) is the same as attribute [ALBUMINURIA\\_STAGE](#).~~

**This item has been retired from the NHS Data Model and Dictionary.**

**The last live version of this item is available in the March 2016 release of the NHS Data Model and Dictionary.**

**Access to this version can be obtained by emailing [information.standards@hscic.uk](mailto:information.standards@hscic.uk) with "NHS Data Model and Dictionary - Archive Request" in the email subject line.**

---

**ALBUMINURIA\_STAGE (RETIRED)\_ renamed from ALBUMINURIA\_STAGE**

---

Change to Data Element: Changed Description, Name, status to Retired, linked Attribute

**ALBUMINURIA\_STAGE**

**Attribute:**

<a href="#">ALBUMINURIA_STAGE</a>
-----------------------------------

---

**ALBUMINURIA\_STAGE (RETIRED)\_ renamed from ALBUMINURIA\_STAGE**

---

Change to Data Element: Changed Description, Name, status to Retired, linked Attribute

- Changed Description
- Changed Name from Data\_Dictionary.Data\_Field\_Notes.A.Ag.ALBUMINURIA\_STAGE to Retired.Data\_Dictionary.Data\_Field\_Notes.A.ALBUMINURIA\_STAGE
- Retired ALBUMINURIA\_STAGE
- null

---

**BIRTH\_DATE (RETIRED)\_ renamed from BIRTH\_DATE**

---

Change to Data Element: Changed Description, Name, status to Retired

Format/Length:	n8-ccyymmdd
National Codes:	
Default Codes:	

**Notes:**

~~[BIRTH\\_DATE](#) is the date on which a [PERSON](#) was born.~~ **This item has been retired from the NHS Data Model and Dictionary.**

~~[BIRTH\\_DATE](#) will be replaced with [PERSON\\_BIRTH\\_DATE](#) which is the most recent approved national information standard to describe the required definition.~~ **The last live version of this item is available in the March 2016 release of the NHS Data Model and Dictionary.**

**Access to this version can be obtained by emailing [information.standards@hscic.gov.uk](mailto:information.standards@hscic.gov.uk) with "NHS Data Model and Dictionary - Archive Request" in the email subject line.**

---

**BIRTH DATE (RETIRED)\_ renamed from BIRTH DATE**

---

Change to Data Element: Changed Description, Name, status to Retired

- Changed Description
- Changed Name from Data\_Dictionary.Data\_Field\_Notes.B.Be.BIRTH\_DATE to Retired.Data\_Dictionary.Data\_Field\_Notes.B.BIRTH\_DATE
- Retired BIRTH DATE

---

**BODY MASS INDEX**

---

Change to Data Element: Changed Description

Format/Length:	n2.n1
National Codes:	
Default Codes:	

**Notes:**

[BODY MASS INDEX \(BMI\)](#) is the [Body Mass Index](#) of the [PATIENT](#).

For the [Cancer Outcomes and Services Data Set](#), [BODY MASS INDEX](#) is the estimate of a [PATIENT](#)'s [Body Mass Index](#) at [PATIENT DIAGNOSIS](#).

~~**PERSON OBSERVATION (BMI) will be replaced with BODY MASS INDEX, which is the most recent approved national information standard to describe the required definition.**~~

---

**DIABETES ROUTINE REVIEW (EYE) (RETIRED)\_ renamed from DIABETES ROUTINE REVIEW (EYE)**

---

Change to Data Element: Changed Description, Name, status to Retired, linked Attribute

Format/length:	n2
National Codes:	See <a href="#">DIABETES ROUTINE REVIEW CODE</a>
Default Codes:	

**Notes:**

A [DIABETES ROUTINE REVIEW CODE](#) of the eyes within an approved diabetes eye screening programme. **This item has been retired from the NHS Data Model and Dictionary.**

**The last live version of this item is available in the March 2016 release of the NHS Data Model and Dictionary.**

**Access to this version can be obtained by emailing [information.standards@hscic.gov.uk](mailto:information.standards@hscic.gov.uk) with "NHS Data Model and Dictionary - Archive Request" in the email subject line.**

---

**DIABETES ROUTINE REVIEW (EYE) (RETIRED)\_ renamed from DIABETES ROUTINE REVIEW (EYE)**

---

Change to Data Element: Changed Description, Name, status to Retired, linked Attribute

**DIABETES ROUTINE REVIEW (EYE)****Attribute:**

<a href="#">DIABETES ROUTINE REVIEW CODE</a>
----------------------------------------------

---

**DIABETES ROUTINE REVIEW (EYE) (RETIRED)\_ renamed from DIABETES ROUTINE REVIEW (EYE)**

---

Change to Data Element: Changed Description, Name, status to Retired, linked Attribute

- Changed Description
- Changed Name from Data\_Dictionary.Data\_Field\_Notes.D.Dia.DIABETES\_ROUTINE\_REVIEW\_(EYE) to Retired.Data\_Dictionary.Data\_Field\_Notes.D.DIABETES\_ROUTINE\_REVIEW\_(EYE)
- Retired DIABETES ROUTINE REVIEW (EYE)
- null

---

**DIABETES ROUTINE REVIEW (FOOT) (RETIRED)\_ renamed from DIABETES ROUTINE REVIEW (FOOT)**

---

Change to Data Element: Changed Description, Name, status to Retired, linked Attribute

Format/length:	n2
National Codes:	See <a href="#">DIABETES ROUTINE REVIEW CODE</a>
Default Codes:	

**Notes:**

A [DIABETES ROUTINE REVIEW CODE](#) of the foot carried out by appropriately trained personnel using an approved foot screening procedure. **This item has been retired from the NHS Data Model and Dictionary.**

**The last live version of this item is available in the March 2016 release of the NHS Data Model and Dictionary.**

**Access to this version can be obtained by emailing [information.standards@hscic.gov.uk](mailto:information.standards@hscic.gov.uk) with "NHS Data Model and Dictionary - Archive Request" in the email subject line.**

---

**DIABETES ROUTINE REVIEW (FOOT) (RETIRED)\_ renamed from DIABETES ROUTINE REVIEW (FOOT)**

---

Change to Data Element: Changed Description, Name, status to Retired, linked Attribute

**DIABETES ROUTINE REVIEW (FOOT)****Attribute:**

<a href="#">DIABETES ROUTINE REVIEW CODE</a>
----------------------------------------------

---

**DIABETES ROUTINE REVIEW (FOOT) (RETIRED)\_ renamed from DIABETES ROUTINE REVIEW (FOOT)**

---

Change to Data Element: Changed Description, Name, status to Retired, linked Attribute

- Changed Description
- Changed Name from Data\_Dictionary.Data\_Field\_Notes.D.Dia.DIABETES\_ROUTINE\_REVIEW\_(FOOT) to Retired.Data\_Dictionary.Data\_Field\_Notes.D.DIABETES\_ROUTINE\_REVIEW\_(FOOT)
- Retired DIABETES ROUTINE REVIEW (FOOT)
- null

---

**DIABETES TYPE (RETIRED)\_ renamed from DIABETES TYPE**

---

Change to Data Element: Changed Description, Name, status to Retired, linked Attribute

Format/Length:	n2
National Codes:	See <a href="#">DIABETES TYPE</a>
Default Codes:	

**Notes:**

~~DIABETES\_TYPE~~ is the same as attribute ~~DIABETES\_TYPE~~. This item has been retired from the NHS Data Model and Dictionary.

The last live version of this item is available in the March 2016 release of the NHS Data Model and Dictionary.

Access to this version can be obtained by emailing [information.standards@hscic.gov.uk](mailto:information.standards@hscic.gov.uk) with "NHS Data Model and Dictionary - Archive Request" in the email subject line.

---

**DIABETES TYPE (RETIRED)**\_ renamed from **DIABETES TYPE**

---

Change to Data Element: Changed Description, Name, status to Retired, linked Attribute

### DIABETES\_TYPE

**Attribute:**

<a href="#">DIABETES_TYPE</a>
-------------------------------

---

**DIABETES TYPE (RETIRED)**\_ renamed from **DIABETES TYPE**

---

Change to Data Element: Changed Description, Name, status to Retired, linked Attribute

- Changed Description
- Changed Name from Data\_Dictionary.Data\_Field\_Notes.D.Dia.DIABETES\_TYPE to Retired.Data\_Dictionary.Data\_Field\_Notes.D.DIABETES\_TYPE
- Retired DIABETES TYPE
- null

---

**DIAGNOSTIC CODING (DIABETES RELEVANT ICD-10) (RETIRED)**\_ renamed from **DIAGNOSTIC CODING (DIABETES RELEVANT ICD-10)**

---

Change to Data Element: Changed Description, Name, status to Retired, linked Attribute

Format/Length:	an6
National Codes:	
Default Codes:	

**Notes:**

~~DIAGNOSTIC CODING (DIABETES RELEVANT ICD 10)~~ is the [International Classification of Diseases \(ICD\)](#) code identified in the following relevant conditions and complications associated with the diabetic condition: The list shows those conditions and complications currently extracted by QUIDS using data linkage to [Hospital Episode Statistics \(HES\)](#).

**ICD-10 Codes for relevant conditions and complications** This item has been retired from the NHS Data Model and Dictionary.

#### **HYPERDKA (Hyperglycaemic emergencies)**

- E10.1 Type 1 diabetes mellitus with ketoacidosis
- E11.1 Type 2 diabetes mellitus with ketoacidosis
- E13.1 Other specified diabetes mellitus with ketoacidosis
- E14.1 Unspecified diabetes mellitus with ketoacidosis
- E10.0 Type 1 diabetes mellitus with coma
- E11.0 Type 2 diabetes mellitus with coma
- E13.0 Other specified diabetes mellitus with coma
- E14.0 Unspecified diabetes mellitus with coma

**ANGINA**

- I20.0 Unstable angina
- I20.1 Angina pectoris with documented spasm
- I20.8 Other forms of angina pectoris
- I20.9 Angina pectoris, unspecified

**MI (Myocardial Infarction)**

- I21.0 Acute transmural myocardial infarction of anterior wall
- I21.1 Acute transmural myocardial infarction of inferior wall
- I21.2 Acute transmural myocardial infarction of other sites
- I21.3 Acute transmural myocardial infarction of unspecified site
- I21.4 Acute subendocardial myocardial infarction
- I21.9 Acute myocardial infarction, unspecified
- I22.0 Subsequent myocardial infarction of anterior wall
- I22.1 Subsequent myocardial infarction of inferior wall
- I22.8 Subsequent myocardial infarction of other sites
- I22.9 Subsequent myocardial infarction of unspecified site

**CF (Cardiac Failure)**

- I50.0 Congestive heart failure.
- I50.1 Left ventricular failure.
- I50.9 Heart failure, unspecified

**CVA (Stroke / Cerebro-Vascular Accident)**

- I61.0 Intracerebral haemorrhage in hemisphere, subcortical
- I61.1 Intracerebral haemorrhage in hemisphere, cortical
- I61.2 Intracerebral haemorrhage in hemisphere, unspecified
- I61.3 Intracerebral haemorrhage in brain stem
- I61.4 Intracerebral haemorrhage in cerebellum
- I61.5 Intracerebral haemorrhage, intraventricular
- I61.6 Intracerebral haemorrhage, multiple localised
- I61.8 Other intracerebral haemorrhage
- I61.9 Intracerebral haemorrhage, unspecified
- I63.0 Cerebral infarct due to thrombosis of precerebral arteries
- I63.1 Cerebral infarction due to embolism of precerebral arteries
- I63.2 Cerebral infarct due to unspecified occlusion or stenosis of precerebral arteries
- I63.3 Cerebral infarction due to thrombosis of cerebral arteries
- I63.4 Cerebral infarction due to embolism of cerebral arteries
- I63.5 Cerebral infarction due to unspecified occlusion or stenosis of cerebral arteries
- I63.6 Cerebral infarction due to cerebral venous thrombosis, nonpyogenic
- I63.8 Other cerebral infarction
- I63.9 Cerebral infarction, unspecified
- I64.X Stroke, not specified as haemorrhage or infarction

**RRT (End stage renal failure requiring renal replacement therapy)**

- N18.5 Chronic kidney disease, stage 5
- Z99.2 Dependence on renal dialysis
- Z49.0 Preparatory care for dialysis
- Z49.1 Extracorporeal dialysis
- Z49.2 Other dialysis

**The last live version of this item is available in the March 2016 release of the NHS Data Model and Dictionary.**

**Access to this version can be obtained by emailing [information.standards@hscic.gov.uk](mailto:information.standards@hscic.gov.uk) with "NHS Data Model and Dictionary - Archive Request" in the email subject line.**

**DIAGNOSTIC CODING (DIABETES RELEVANT ICD-10) (RETIRED)\_ renamed from DIAGNOSTIC CODING (DIABETES RELEVANT ICD-10)**

Change to Data Element: Changed Description, Name, status to Retired, linked Attribute

**DIAGNOSTIC CODING (DIABETES RELEVANT ICD-10)**

**Attribute:**

CLINICAL CLASSIFICATION CODE

**DIAGNOSTIC CODING (DIABETES RELEVANT ICD-10) (RETIRED)\_ renamed from DIAGNOSTIC CODING (DIABETES RELEVANT ICD-10)**

Change to Data Element: Changed Description, Name, status to Retired, linked Attribute

- Changed Description
- Changed Name from Data\_Dictionary.Data\_Field\_Notes.D.Diag.DIAGNOSTIC\_CODING\_(DIABETES\_RELEVANT\_ICD-10) to Retired.Data\_Dictionary.Data\_Field\_Notes.D.DIAGNOSTIC\_CODING\_(DIABETES\_RELEVANT\_ICD-10)
- Retired DIAGNOSTIC CODING (DIABETES RELEVANT ICD-10)
- null

**DIAGNOSTIC CODING (DIABETES RELEVANT READ CODES) (RETIRED)\_ renamed from DIAGNOSTIC CODING (DIABETES RELEVANT READ CODES)**

Change to Data Element: Changed Description, Name, status to Retired, linked Attribute

Format/Length: an7  
National Codes:  
Default Codes:

**Notes:**

DIAGNOSTIC CODING (DIABETES RELEVANT READ CODES) is the Read Coded Clinical Terms identified in the following relevant conditions and complication associated with the diabetic condition:

**Read Codes (diagnosis) This item has been retired from the NHS Data Model and Dictionary.**

**DKA (Hyperglycaemic emergencies)**

**4Byte Version** (retired 1 October 2009)

- ~~E2.. Diabetes mellitus (retired 1 October 2009)  
Ketoacidosis – diabetic (synonym) (retired 1 October 2009)~~
- ~~E24. Diabetes mellitus + ketoacidosis – no coma (retired 1 October 2009)~~
- ~~E25. Diabetes with coma (retired 1 October 2009)~~

**Version 2**

- ~~E101. Diabetes mellitus with ketoacidosis~~
- ~~E1010 Diabetes mellitus, juvenile type, with ketoacidosis~~
- ~~E1011 Diabetes mellitus, adult onset, with ketoacidosis~~
- ~~E101y Other specified diabetes mellitus with ketoacidosis~~
- ~~E101z Diabetes mellitus NOS with ketoacidosis~~

**ANGINA**

**4Byte Version** (retired 1 October 2009)

- ~~G44. Angina pectoris (retired 1 October 2009)~~
- ~~G440 Unstable angina (retired 1 October 2009)~~
- ~~G444 Stable angina (retired 1 October 2009)~~

**Version 2**

- ~~G3111 Unstable angina~~
- ~~G33.. Angina pectoris~~
- ~~G33z. Angina pectoris NOS~~

G33z7 Stable angina

### MI (Myocardial Infarction)

~~4Byte Version (retired 1 October 2009)~~

~~G6A. Heart failure (preferred term) (retired 1 October 2009)  
Cardiac failure (synonym) (retired 1 October 2009)~~

~~G6A1 Congestive cardiac failure (retired 1 October 2009)~~

### Version 2

~~G58. Heart failure (preferred term)  
Cardiac failure (synonym)~~

~~G580. Congestive cardiac failure~~

### CVA (Stroke/Cerebro-Vascular Accident)

~~4Byte Version (retired 1 October 2009)~~

~~G7. Cerebrovascular disease (retired 1 October 2009)~~

~~G712 Intracerebral haemorrhage (retired 1 October 2009)~~

~~G73. Cerebral arterial occlusion (retired 1 October 2009)~~

~~G75. Stroke/CVA undefined (retired 1 October 2009)~~

### Version 2

~~G6. Cerebrovascular disease~~

~~G61. Intracerebral haemorrhage~~

~~G64. Cerebral arterial occlusion~~

~~G66. Stroke/CVA unspecified~~

### RRT (End stage renal failure requiring renal replacement therapy)

~~4Byte Version (retired 1 October 2009)~~

~~J16. Chronic renal failure (preferred term) (retired 1 October 2009)  
End stage renal failure (synonym) (retired 1 October 2009)~~

### Version 2

~~K050. End stage renal failure~~

The last live version of this item is available in the March 2016 release of the NHS Data Model and Dictionary.

Access to this version can be obtained by emailing [information.standards@hscic.gov.uk](mailto:information.standards@hscic.gov.uk) with "NHS Data Model and Dictionary - Archive Request" in the email subject line.

---

DIAGNOSTIC CODING (DIABETES RELEVANT READ CODES) (RETIRED)\_renamed\_ from DIAGNOSTIC CODING (DIABETES RELEVANT READ CODES)

---

Change to Data Element: Changed Description, Name, status to Retired, linked Attribute

## DIAGNOSTIC CODING (DIABETES RELEVANT READ CODES)

Attribute:

[CLINICAL TERMINOLOGY CODE](#)

---

DIAGNOSTIC CODING (DIABETES RELEVANT READ CODES) (RETIRED)\_renamed\_ from DIAGNOSTIC CODING (DIABETES RELEVANT READ CODES)

---

Change to Data Element: Changed Description, Name, status to Retired, linked Attribute

- Changed Description
- Changed Name from Data\_Dictionary.Data\_Field\_Notes.D.Diag.DIAGNOSTIC\_CODING\_(DIABETES\_RELEVANT\_READ\_CODES) to Retired.Data\_Dictionary.Data\_Field\_Notes.D.DIAGNOSTIC\_CODING\_(DIABETES\_RELEVANT\_READ\_CODES)
- Retired DIAGNOSTIC CODING (DIABETES RELEVANT READ CODES)

- null

**OBSERVATION DATE (BMI) (RETIRED)\_ renamed from OBSERVATION DATE (BMI)**

Change to Data Element: Changed Description, Name, status to Retired, linked Attribute

Format/Length:	see <a href="#">DATE</a>
National Codes:	
Default Codes:	

**Notes:**

~~[OBSERVATION DATE \(BMI\)](#) is the same as attribute [ACTIVITY DATE](#) where the [ACTIVITY DATE TYPE](#) is National Code '[Clinical Intervention Date](#)'.~~

~~[OBSERVATION DATE \(BMI\)](#) is the date when the [Body Mass Index](#) was calculated. **This item has been retired from the NHS Data Model and Dictionary.**~~

**The last live version of this item is available in the March 2016 release of the NHS Data Model and Dictionary.**

**Access to this version can be obtained by emailing [information.standards@hscic.gov.uk](mailto:information.standards@hscic.gov.uk) with "NHS Data Model and Dictionary - Archive Request" in the email subject line.**

**OBSERVATION DATE (BMI) (RETIRED)\_ renamed from OBSERVATION DATE (BMI)**

Change to Data Element: Changed Description, Name, status to Retired, linked Attribute

**OBSERVATION DATE (BMI)**

**Attribute:**

<a href="#">ACTIVITY DATE</a>
-------------------------------

**OBSERVATION DATE (BMI) (RETIRED)\_ renamed from OBSERVATION DATE (BMI)**

Change to Data Element: Changed Description, Name, status to Retired, linked Attribute

- Changed Description
- Changed Name from Data\_Dictionary.Data\_Field\_Notes.O.OBSERVATION\_DATE\_(BMI) to Retired.Data\_Dictionary.Data\_Field\_Notes.O.OBSERVATION\_DATE\_(BMI)
- Retired OBSERVATION DATE (BMI)
- null

**OBSERVATION DATE (DIABETES RELEVANT DIAGNOSIS) (RETIRED)\_ renamed from OBSERVATION DATE (DIABETES RELEVANT DIAGNOSIS)**

Change to Data Element: Changed Description, Name, status to Retired, linked Attribute

Format/Length:	see <a href="#">DATE</a>
National Codes:	
Default Codes:	

**Notes:**

~~[OBSERVATION DATE \(DIABETES RELEVANT DIAGNOSIS\)](#) is the same as attribute [PERSON PROPERTY EFFECTIVE DATE](#).~~

~~OBSERVATION DATE (DIABETES RELEVANT DIAGNOSIS)~~ is the date when the ~~DIAGNOSTIC CODING (DIABETES RELEVANT ICD 10)~~ or ~~DIAGNOSTIC CODING (DIABETES RELEVANT READ CODES)~~ was first recognised or the date on which a diabetic complication occurred. **This item has been retired from the NHS Data Model and Dictionary.**

**The last live version of this item is available in the March 2016 release of the NHS Data Model and Dictionary.**

**Access to this version can be obtained by emailing [information.standards@hscic.gov.uk](mailto:information.standards@hscic.gov.uk) with "NHS Data Model and Dictionary - Archive Request" in the email subject line.**

---

**OBSERVATION DATE (DIABETES RELEVANT DIAGNOSIS) (RETIRED)\_** renamed from **OBSERVATION DATE (DIABETES RELEVANT DIAGNOSIS)**

---

Change to Data Element: Changed Description, Name, status to Retired, linked Attribute

### **OBSERVATION DATE (DIABETES RELEVANT DIAGNOSIS)**

**Attribute:**

[PERSON PROPERTY OBSERVED DATE](#)

---

**OBSERVATION DATE (DIABETES RELEVANT DIAGNOSIS) (RETIRED)\_** renamed from **OBSERVATION DATE (DIABETES RELEVANT DIAGNOSIS)**

---

Change to Data Element: Changed Description, Name, status to Retired, linked Attribute

- Changed Description
- Changed Name from Data\_Dictionary.Data\_Field\_Notes.O.OBSERVATION\_DATE\_(DIABETES\_RELEVANT\_DIAGNOSIS) to Retired.Data\_Dictionary.Data\_Field\_Notes.O.OBSERVATION\_DATE\_(DIABETES\_RELEVANT\_DIAGNOSIS)
- Retired OBSERVATION DATE (DIABETES RELEVANT DIAGNOSIS)
- null

---

**OBSERVATION DATE (EYE EXAMINATION) (RETIRED)\_** renamed from **OBSERVATION DATE (EYE EXAMINATION)**

---

Change to Data Element: Changed Description, Name, status to Retired, linked Attribute

Format/Length:	see <a href="#">DATE</a>
National Codes:	
Default Codes:	

**Notes:**

~~OBSERVATION DATE (EYE EXAMINATION)~~ is the same as attribute ~~ACTIVITY DATE~~ where the ~~ACTIVITY DATE TYPE~~ is National Code '~~Clinical Intervention Date~~'.

~~OBSERVATION DATE (EYE EXAMINATION)~~ is the date when the ~~DIABETES ROUTINE REVIEW (EYE)~~ took place. **This item has been retired from the NHS Data Model and Dictionary.**

**The last live version of this item is available in the March 2016 release of the NHS Data Model and Dictionary.**

**Access to this version can be obtained by emailing [information.standards@hscic.gov.uk](mailto:information.standards@hscic.gov.uk) with "NHS Data Model and Dictionary - Archive Request" in the email subject line.**

**OBSERVATION DATE (EYE EXAMINATION) (RETIRED)\_ renamed from OBSERVATION DATE (EYE EXAMINATION)**

Change to Data Element: Changed Description, Name, status to Retired, linked Attribute

**OBSERVATION DATE (EYE EXAMINATION)**

Attribute:

[ACTIVITY DATE](#)

**OBSERVATION DATE (EYE EXAMINATION) (RETIRED)\_ renamed from OBSERVATION DATE (EYE EXAMINATION)**

Change to Data Element: Changed Description, Name, status to Retired, linked Attribute

- Changed Description
- Changed Name from Data\_Dictionary.Data\_Field\_Notes.O.OBSERVATION\_DATE\_(EYE\_EXAMINATION) to Retired.Data\_Dictionary.Data\_Field\_Notes.O.OBSERVATION\_DATE\_(EYE\_EXAMINATION)
- Retired OBSERVATION DATE (EYE EXAMINATION)
- null

**OBSERVATION DATE (FOOT EXAMINATION) (RETIRED)\_ renamed from OBSERVATION DATE (FOOT EXAMINATION)**

Change to Data Element: Changed Description, Name, status to Retired, linked Attribute

Format/Length: see [DATE](#)  
National Codes:  
Default Codes:

Notes:

~~[OBSERVATION DATE \(FOOT EXAMINATION\)](#) is the same as attribute [ACTIVITY DATE](#) where the [ACTIVITY DATE TYPE](#) is National Code '[Clinical Intervention Date](#)'.~~

~~[OBSERVATION DATE \(FOOT EXAMINATION\)](#) is the date when the [DIABETES ROUTINE REVIEW \(FOOT\)](#) took place. **This item has been retired from the NHS Data Model and Dictionary.**~~

**The last live version of this item is available in the March 2016 release of the NHS Data Model and Dictionary.**

**Access to this version can be obtained by emailing [information.standards@hscic.gov.uk](mailto:information.standards@hscic.gov.uk) with "NHS Data Model and Dictionary - Archive Request" in the email subject line.**

**OBSERVATION DATE (FOOT EXAMINATION) (RETIRED)\_ renamed from OBSERVATION DATE (FOOT EXAMINATION)**

Change to Data Element: Changed Description, Name, status to Retired, linked Attribute

**OBSERVATION DATE (FOOT EXAMINATION)**

Attribute:

[ACTIVITY DATE](#)

**OBSERVATION DATE (FOOT EXAMINATION) (RETIRED)\_ renamed from OBSERVATION DATE (FOOT EXAMINATION)**

Change to Data Element: Changed Description, Name, status to Retired, linked Attribute

- Changed Description
- Changed Name from Data\_Dictionary.Data\_Field\_Notes.O.OBSERVATION\_DATE\_(FOOT\_EXAMINATION) to Retired.Data\_Dictionary.Data\_Field\_Notes.O.OBSERVATION\_DATE\_(FOOT\_EXAMINATION)
- Retired OBSERVATION DATE (FOOT EXAMINATION)

- null

**OBSERVATION DATE (SERUM CHOLESTEROL LEVEL) (RETIRED)**\_\_ renamed from **OBSERVATION DATE (SERUM CHOLESTEROL LEVEL)**

Change to Data Element: Changed Description, Name, status to Retired, linked Attribute

Format/Length:	see <a href="#">DATE</a>
National Codes:	
Default Codes:	

**Notes:**

~~[OBSERVATION DATE \(SERUM CHOLESTEROL LEVEL\)](#) is the same as attribute [ACTIVITY DATE](#) where the [ACTIVITY DATE TYPE](#) is National Code '[Clinical Intervention Date](#)'.~~

~~[OBSERVATION DATE \(SERUM CHOLESTEROL LEVEL\)](#) is the date when the [Serum Cholesterol Level](#) was measured.~~ **This item has been retired from the NHS Data Model and Dictionary.**

**The last live version of this item is available in the March 2016 release of the NHS Data Model and Dictionary.**

**Access to this version can be obtained by emailing [information.standards@hscic.gov.uk](mailto:information.standards@hscic.gov.uk) with "NHS Data Model and Dictionary - Archive Request" in the email subject line.**

**OBSERVATION DATE (SERUM CHOLESTEROL LEVEL) (RETIRED)**\_\_ renamed from **OBSERVATION DATE (SERUM CHOLESTEROL LEVEL)**

Change to Data Element: Changed Description, Name, status to Retired, linked Attribute

**OBSERVATION DATE (SERUM CHOLESTEROL LEVEL)**

**Attribute:**

<a href="#">ACTIVITY DATE</a>
-------------------------------

**OBSERVATION DATE (SERUM CHOLESTEROL LEVEL) (RETIRED)**\_\_ renamed from **OBSERVATION DATE (SERUM CHOLESTEROL LEVEL)**

Change to Data Element: Changed Description, Name, status to Retired, linked Attribute

- Changed Description
- Changed Name from Data\_Dictionary.Data\_Field\_Notes.O.OBSERVATION\_DATE\_(SERUM\_CHOLESTEROL\_LEVEL) to Retired.Data\_Dictionary.Data\_Field\_Notes.O.OBSERVATION\_DATE\_(SERUM\_CHOLESTEROL\_LEVEL)
- Retired OBSERVATION DATE (SERUM CHOLESTEROL LEVEL)
- null

**OBSERVATION DATE (SERUM CREATININE LEVEL) (RETIRED)**\_\_ renamed from **OBSERVATION DATE (SERUM CREATININE LEVEL)**

Change to Data Element: Changed Description, Name, status to Retired, linked Attribute

Format/Length:	see <a href="#">DATE</a>
National Codes:	
Default Codes:	

**Notes:**

~~OBSERVATION DATE (SERUM CREATININE LEVEL) is the same as attribute [ACTIVITY DATE](#) where the [ACTIVITY DATE TYPE](#) is National Code '[Clinical Intervention Date](#)'.~~

~~OBSERVATION DATE (SERUM CREATININE LEVEL) is the date when the [Serum Creatinine Level](#) was measured. **This item has been retired from the NHS Data Model and Dictionary.**~~

**The last live version of this item is available in the March 2016 release of the NHS Data Model and Dictionary.**

**Access to this version can be obtained by emailing [information.standards@hscic.gov.uk](mailto:information.standards@hscic.gov.uk) with "NHS Data Model and Dictionary - Archive Request" in the email subject line.**

---

**OBSERVATION DATE (SERUM CREATININE LEVEL) (RETIRED)\_** renamed from **OBSERVATION DATE (SERUM CREATININE LEVEL)**

---

Change to Data Element: Changed Description, Name, status to Retired, linked Attribute

### **OBSERVATION DATE (SERUM CREATININE LEVEL)**

**Attribute:**

<a href="#">ACTIVITY DATE</a>
-------------------------------

---

**OBSERVATION DATE (SERUM CREATININE LEVEL) (RETIRED)\_** renamed from **OBSERVATION DATE (SERUM CREATININE LEVEL)**

---

Change to Data Element: Changed Description, Name, status to Retired, linked Attribute

- Changed Description
- Changed Name from Data\_Dictionary.Data\_Field\_Notes.O.OBSERVATION\_DATE\_(SERUM\_CREATININE\_LEVEL) to Retired.Data\_Dictionary.Data\_Field\_Notes.O.OBSERVATION\_DATE\_(SERUM\_CREATININE\_LEVEL)
- Retired OBSERVATION DATE (SERUM CREATININE LEVEL)
- null

---

**OBSERVATION DATE (URINARY ALBUMIN LEVEL) (RETIRED)\_** renamed from **OBSERVATION DATE (URINARY ALBUMIN LEVEL)**

---

Change to Data Element: Changed Description, Name, status to Retired, linked Attribute

Format/Length:	see <a href="#">DATE</a>
National Codes:	
Default Codes:	

**Notes:**

~~OBSERVATION DATE (URINARY ALBUMIN LEVEL) is the same as attribute [ACTIVITY DATE](#) where the [ACTIVITY DATE TYPE](#) is National Code '[Clinical Intervention Date](#)'.~~

~~OBSERVATION DATE (URINARY ALBUMIN LEVEL) is the date when the [Urinary Albumin Level](#) was taken. **This item has been retired from the NHS Data Model and Dictionary.**~~

**The last live version of this item is available in the March 2016 release of the NHS Data Model and Dictionary.**

**Access to this version can be obtained by emailing [information.standards@hscic.gov.uk](mailto:information.standards@hscic.gov.uk) with "NHS Data Model and Dictionary - Archive Request" in the email subject line.**

---

**OBSERVATION DATE (URINARY ALBUMIN LEVEL) (RETIRED)\_ renamed from OBSERVATION DATE (URINARY ALBUMIN LEVEL)**

---

Change to Data Element: Changed Description, Name, status to Retired, linked Attribute

**OBSERVATION DATE (URINARY ALBUMIN LEVEL)**

**Attribute:**

[ACTIVITY DATE](#)

---

**OBSERVATION DATE (URINARY ALBUMIN LEVEL) (RETIRED)\_ renamed from OBSERVATION DATE (URINARY ALBUMIN LEVEL)**

---

Change to Data Element: Changed Description, Name, status to Retired, linked Attribute

- Changed Description
  - Changed Name from Data\_Dictionary.Data\_Field\_Notes.O.OBSERVATION\_DATE\_(URINARY\_ALBUMIN\_LEVEL) to Retired.Data\_Dictionary.Data\_Field\_Notes.O.OBSERVATION\_DATE\_(URINARY\_ALBUMIN\_LEVEL)
  - Retired OBSERVATION DATE (URINARY ALBUMIN LEVEL)
  - null
- 

**PERSON BIRTH DATE**

---

Change to Data Element: Changed Description

Format/Length:	See <a href="#">DATE</a>
<a href="#">NWDS</a> ID:	PEBD
<a href="#">NWDS</a> Field Name:	Date of Birth
National Codes:	
Default Codes:	

---

**Notes:**

[PERSON BIRTH DATE](#) is the same as attribute [PERSON BIRTH DATE](#).

~~**[BIRTH DATE](#) will be replaced with [PERSON BIRTH DATE](#) which is the most recent approved national information standard to describe the required definition.**~~

---

**PERSON OBSERVATION (BMI) (RETIRED)\_ renamed from PERSON OBSERVATION (BMI)**

---

Change to Data Element: Changed Description, Name, status to Retired

Format/Length:	nn.n
National Codes:	
Default Codes:	

---

**Notes:**

~~[PERSON OBSERVATION \(BMI\)](#) is the [Body Mass Index](#) of the [PATIENT](#).~~

~~**[PERSON OBSERVATION \(BMI\)](#) will be replaced with [BODY MASS INDEX](#), which is the most recent approved national information standard to describe the required definition. This item has been retired from the NHS Data Model and Dictionary.**~~

**The last live version of this item is available in the March 2016 release of the NHS Data Model and Dictionary.**

Access to this version can be obtained by emailing [information.standards@hscic.gov.uk](mailto:information.standards@hscic.gov.uk) with "NHS Data Model and Dictionary - Archive Request" in the email subject line.

---

**PERSON OBSERVATION (BMI) (RETIRED)\_ renamed from PERSON OBSERVATION (BMI)**

---

Change to Data Element: Changed Description, Name, status to Retired

- Changed Description
- Changed Name from Data\_Dictionary.Data\_Field\_Notes.P.Pers.PERSON\_OBSERVATION\_(BMI) to Retired.Data\_Dictionary.Data\_Field\_Notes.P.PERSON\_OBSERVATION\_(BMI)
- Retired PERSON OBSERVATION (BMI)

---

**PERSON OBSERVATION (HBA1C LEVEL) (RETIRED)\_ renamed from PERSON OBSERVATION (HBA1C LEVEL)**

---

Change to Data Element: Changed Description, Name, status to Retired, linked Attribute

Format/Length:	n2.n1
National Codes:	
Default Codes:	

**Notes:**

~~PERSON OBSERVATION (HbA1c LEVEL) is the result of the Clinical Investigation which measures the PATIENT's Glycated Hemoglobin (HbA1c), where the UNIT OF MEASUREMENT is 'Millimoles per litre (mmol/L)'. This item has been retired from the NHS Data Model and Dictionary.~~

**The last live version of this item is available in the March 2016 release of the NHS Data Model and Dictionary.**

Access to this version can be obtained by emailing [information.standards@hscic.gov.uk](mailto:information.standards@hscic.gov.uk) with "NHS Data Model and Dictionary - Archive Request" in the email subject line.

---

**PERSON OBSERVATION (HBA1C LEVEL) (RETIRED)\_ renamed from PERSON OBSERVATION (HBA1C LEVEL)**

---

Change to Data Element: Changed Description, Name, status to Retired, linked Attribute

**PERSON OBSERVATION (HbA1c LEVEL)**

**Attribute:**

<a href="#">CLINICAL INVESTIGATION RESULT VALUE</a>
-----------------------------------------------------

---

**PERSON OBSERVATION (HBA1C LEVEL) (RETIRED)\_ renamed from PERSON OBSERVATION (HBA1C LEVEL)**

---

Change to Data Element: Changed Description, Name, status to Retired, linked Attribute

- Changed Description
- Changed Name from Data\_Dictionary.Data\_Field\_Notes.P.Pers.PERSON\_OBSERVATION\_(HbA1c\_LEVEL) to Retired.Data\_Dictionary.Data\_Field\_Notes.P.PERSON\_OBSERVATION\_(HbA1c\_LEVEL)
- Retired PERSON OBSERVATION (HbA1c LEVEL)
- null

---

**PERSON OBSERVATION (SERUM CHOLESTEROL LEVEL) (RETIRED)\_ renamed from PERSON OBSERVATION (SERUM CHOLESTEROL LEVEL)**

---

Change to Data Element: Changed Description, Name, status to Retired, linked Attribute

Format/Length:	n3
National Codes:	
Default Codes:	

**Notes:**

~~PERSON OBSERVATION (SERUM CHOLESTEROL LEVEL)~~ is the result of the ~~Clinical Investigation~~ which measures the ~~PATIENT's Serum Cholesterol Level~~, where the ~~UNIT OF MEASUREMENT~~ is 'Millimoles per litre (mmol/L)'. **This item has been retired from the NHS Data Model and Dictionary.**

**The last live version of this item is available in the March 2016 release of the NHS Data Model and Dictionary.**

**Access to this version can be obtained by emailing [information.standards@hscic.gov.uk](mailto:information.standards@hscic.gov.uk) with "NHS Data Model and Dictionary - Archive Request" in the email subject line.**

---

**PERSON OBSERVATION (SERUM CHOLESTEROL LEVEL) (RETIRED)\_ renamed from PERSON OBSERVATION (SERUM CHOLESTEROL LEVEL)**

Change to Data Element: Changed Description, Name, status to Retired, linked Attribute

### **PERSON OBSERVATION (SERUM CHOLESTEROL LEVEL)**

**Attribute:**

<a href="#">CLINICAL INVESTIGATION RESULT VALUE</a>
-----------------------------------------------------

---

**PERSON OBSERVATION (SERUM CHOLESTEROL LEVEL) (RETIRED)\_ renamed from PERSON OBSERVATION (SERUM CHOLESTEROL LEVEL)**

Change to Data Element: Changed Description, Name, status to Retired, linked Attribute

- Changed Description
- Changed Name from Data\_Dictionary.Data\_Field\_Notes.P.Pers.PERSON\_OBSERVATION\_(SERUM\_CHOLESTEROL\_LEVEL) to Retired.Data\_Dictionary.Data\_Field\_Notes.P.PERSON\_OBSERVATION\_(SERUM\_CHOLESTEROL\_LEVEL)
- Retired PERSON OBSERVATION (SERUM CHOLESTEROL LEVEL)
- null

---

**PERSON OBSERVATION (SERUM CREATININE LEVEL) (RETIRED)\_ renamed from PERSON OBSERVATION (SERUM CREATININE LEVEL)**

Change to Data Element: Changed Description, Name, status to Retired, linked Attribute

Format/Length:	n4
National Codes:	
Default Codes:	

**Notes:**

~~PERSON OBSERVATION (SERUM CREATININE LEVEL)~~ is the result of the ~~Clinical Investigation~~ which measures the ~~PATIENT's Serum Creatinine Level~~, using laboratory assay, where the ~~UNIT OF MEASUREMENT~~ is 'Micromoles per litre (µmol/L)'. **This item has been retired from the NHS Data Model and Dictionary.**

**The last live version of this item is available in the March 2016 release of the NHS Data Model and Dictionary.**

Access to this version can be obtained by emailing [information.standards@hscic.gov.uk](mailto:information.standards@hscic.gov.uk) with "NHS Data Model and Dictionary - Archive Request" in the email subject line.

---

PERSON OBSERVATION (SERUM CREATININE LEVEL) (RETIRED)\_ renamed from PERSON OBSERVATION (SERUM CREATININE LEVEL)

---

Change to Data Element: Changed Description, Name, status to Retired, linked Attribute

### **PERSON OBSERVATION (SERUM CREATININE LEVEL)**

Attribute:

[CLINICAL INVESTIGATION RESULT VALUE](#)

---

PERSON OBSERVATION (SERUM CREATININE LEVEL) (RETIRED)\_ renamed from PERSON OBSERVATION (SERUM CREATININE LEVEL)

---

Change to Data Element: Changed Description, Name, status to Retired, linked Attribute

- Changed Description
  - Changed Name from Data\_Dictionary.Data\_Field\_Notes.P.Pers.PERSON\_OBSERVATION\_(SERUM\_CREATININE\_LEVEL) to Retired.Data\_Dictionary.Data\_Field\_Notes.P.PERSON\_OBSERVATION\_(SERUM\_CREATININE\_LEVEL)
  - Retired PERSON OBSERVATION (SERUM CREATININE LEVEL)
  - null
- 

PERSON OBSERVATION (URINARY ALBUMIN LEVEL) (RETIRED)\_ renamed from PERSON OBSERVATION (URINARY ALBUMIN LEVEL)

---

Change to Data Element: Changed Description, Name, status to Retired, linked Attribute

Format/Length:	n3
National Codes:	
Default Codes:	

---

Notes:

[PERSON OBSERVATION \(URINARY ALBUMIN LEVEL\)](#) is the result of the [Clinical Investigation](#) which measures the [PATIENT's Urinary Albumin Level](#) test.

For the [Diabetes Data Set \(Summary Core\)](#), [PERSON OBSERVATION \(URINARY ALBUMIN LEVEL\)](#) must be accompanied by a recorded [URINARY ALBUMIN LEVEL TESTING METHOD](#). **This item has been retired from the NHS Data Model and Dictionary.**

**The last live version of this item is available in the March 2016 release of the NHS Data Model and Dictionary.**

Access to this version can be obtained by emailing [information.standards@hscic.gov.uk](mailto:information.standards@hscic.gov.uk) with "NHS Data Model and Dictionary - Archive Request" in the email subject line.

---

PERSON OBSERVATION (URINARY ALBUMIN LEVEL) (RETIRED)\_ renamed from PERSON OBSERVATION (URINARY ALBUMIN LEVEL)

---

Change to Data Element: Changed Description, Name, status to Retired, linked Attribute

### **PERSON OBSERVATION (URINARY ALBUMIN LEVEL)**

**Attribute:**

CLINICAL INVESTIGATION RESULT VALUE

**PERSON OBSERVATION (URINARY ALBUMIN LEVEL) (RETIRED)**\_ renamed from **PERSON OBSERVATION (URINARY ALBUMIN LEVEL)**

Change to Data Element: Changed Description, Name, status to Retired, linked Attribute

- Changed Description
- Changed Name from Data\_Dictionary.Data\_Field\_Notes.P.Pers.PERSON\_OBSERVATION\_(URINARY\_ALBUMIN\_LEVEL) to Retired.Data\_Dictionary.Data\_Field\_Notes.P.PERSON\_OBSERVATION\_(URINARY\_ALBUMIN\_LEVEL)
- Retired PERSON OBSERVATION (URINARY ALBUMIN LEVEL)
- null

**PROCEDURE CODING (DIABETES RELEVANT OPCS-4) (RETIRED)**\_ renamed from **PROCEDURE CODING (DIABETES RELEVANT OPCS-4)**

Change to Data Element: Changed Description, Name, status to Retired, linked Attribute

Format/Length: See OPCS-4 CODE  
National Codes:  
Default Codes:

**Notes:**

PROCEDURE CODING (DIABETES RELEVANT OPCS-4) is the OPCS Classification of Interventions and Procedures code identified in the following relevant procedures associated with the diabetic condition.

OPCS-4 Codes This item has been retired from the NHS Data Model and Dictionary.

**LASER (Ocular retinal photocoagulation)**

- C82.1 Cauterisation of lesion of retina  
*Includes: Photocoagulation of lesion of retina NEC; Electrocoagulation of lesion of retina NEC*
- Y08.4 Laser destruction of lesion of organ NOC (secondary procedure)

**MINOR AMPUTATION (amputation toe or below ankle)**

- X11.1 Amputation of great toe
- X11.2 Amputation of phalanx of toe
- X11.8 Amputation of toe, other specified
- X11.9 Amputation of toe, unspecified
- X10.1 Amputation of foot through ankle
- X10.8 Amputation of foot, other specified
- X10.9 Amputation of foot, unspecified

**MAJOR AMPUTATION (amputation leg, above or below knee)**

- X09.3 Amputation of leg above knee
- X09.4 Amputation of leg through knee
- X09.5 Amputation of leg below knee

**RRT (End stage renal failure requiring renal replacement therapy)**

- X40.1 Compensation for renal failure, renal dialysis
- X40.2 Compensation for renal failure, peritoneal dialysis NEC
- X40.3 Compensation for renal failure, haemodialysis NEC
- X40.8 Compensation for renal failure, other specified
- X40.9 Compensation for renal failure, unspecified
- M01.1 Transplantation of kidney autotransplantation of kidney
- M01.2 Transplantation of kidney allotransplantation of kidney from live donor
- M01.3 Transplantation of kidney allotransplantation of kidney from cadaver NEC
- M01.8 Transplantation of kidney other specified
- M01.9 Transplantation of kidney unspecified

**The last live version of this item is available in the March 2016 release of the NHS Data Model and Dictionary.**

**Access to this version can be obtained by emailing [information.standards@hscic.gov.uk](mailto:information.standards@hscic.gov.uk) with "NHS Data Model and Dictionary - Archive Request" in the email subject line.**

---

**PROCEDURE CODING (DIABETES RELEVANT OPCS-4) (RETIRED)\_ renamed from PROCEDURE CODING (DIABETES RELEVANT OPCS-4)**

---

Change to Data Element: Changed Description, Name, status to Retired, linked Attribute

### **PROCEDURE CODING (DIABETES RELEVANT OPCS-4)**

**Attribute:**

<a href="#">CLINICAL CLASSIFICATION CODE</a>
----------------------------------------------

---

**PROCEDURE CODING (DIABETES RELEVANT OPCS-4) (RETIRED)\_ renamed from PROCEDURE CODING (DIABETES RELEVANT OPCS-4)**

---

Change to Data Element: Changed Description, Name, status to Retired, linked Attribute

- Changed Description
- Changed Name from Data\_Dictionary.Data\_Field\_Notes.P.Proc.PROCEDURE\_CODING\_(DIABETES\_RELEVANT\_OPCS-4) to Retired.Data\_Dictionary.Data\_Field\_Notes.P.PROCEDURE\_CODING\_(DIABETES\_RELEVANT\_OPCS-4)
- Retired PROCEDURE CODING (DIABETES RELEVANT OPCS-4)
- null

---

**PROCEDURE CODING (DIABETES RELEVANT READ CODES) (RETIRED)\_ renamed from PROCEDURE CODING (DIABETES RELEVANT READ CODES)**

---

Change to Data Element: Changed Description, Name, status to Retired, linked Attribute

Format/Length:	an7
National Codes:	
Default Codes:	

**Notes:**

[PROCEDURE CODING \(DIABETES RELEVANT READ CODES\)](#) is the [Read Coded Clinical Terms](#) identified in the following relevant procedures associated with the diabetic condition.

**Read Codes** This item has been retired from the NHS Data Model and Dictionary.

#### **LASER (Ocular retinal photocoagulation)**

**4Byte Version** (retired 1 October 2009)

8633 Retinal photocoag. therapy (retired 1 October 2009)

#### **Version 2**

No equivalent term

#### **AMPUTATION**

**4Byte Version** (retired 1 October 2009)

7EU: Amputation lower limb (retired 1 October 2009)

7EU1 Amputation of toes (retired 1 October 2009)

7EU2 Amputation foot: tarsal metatar (retired 1 October 2009)

7EU3 Amputation foot: mid tarsal (retired 1 October 2009)

7EU5 Supramalleolar ankle amptat (retired 1 October 2009)

7EU6 Below knee amputation (retired 1 October 2009)

7EU7 Above knee amputation (retired 1 October 2009)

**Version 2**

- 7L06. Amputation of leg
- 7L07. Amputation of foot
- 7L08. Amputation of toe

**RRT (End stage renal failure requiring renal replacement therapy)**

**4Byte Version** (retired 1 October 2009 CP1016)

- 8874 Haemodialysis (preferred term) (retired 1 October 2009)
- Dialysis renal (synonym) (retired 1 October 2009)
- 7A4 Kidney Transplant (retired 1 October 2009)

**Version 2**

- 7L1A. Compensation for renal failure
- 7B00. Kidney Transplant

**The last live version of this item is available in the March 2016 release of the NHS Data Model and Dictionary.**

**Access to this version can be obtained by emailing [information.standards@hscic.gov.uk](mailto:information.standards@hscic.gov.uk) with "NHS Data Model and Dictionary - Archive Request" in the email subject line.**

**PROCEDURE CODING (DIABETES RELEVANT READ CODES) (RETIRED)\_ renamed from PROCEDURE CODING (DIABETES RELEVANT READ CODES)**

Change to Data Element: Changed Description, Name, status to Retired, linked Attribute

**PROCEDURE CODING (DIABETES RELEVANT READ CODES)**

**Attribute:**

[CLINICAL TERMINOLOGY CODE](#)

**PROCEDURE CODING (DIABETES RELEVANT READ CODES) (RETIRED)\_ renamed from PROCEDURE CODING (DIABETES RELEVANT READ CODES)**

Change to Data Element: Changed Description, Name, status to Retired, linked Attribute

- Changed Description
- Changed Name from Data\_Dictionary.Data\_Field\_Notes.P.Proc.PROCEDURE\_CODING\_ (DIABETES\_RELEVANT\_READ\_CODES) to Retired.Data\_Dictionary.Data\_Field\_Notes.P.PROCEDURE\_CODING\_ (DIABETES\_RELEVANT\_READ\_CODES)
- Retired PROCEDURE CODING (DIABETES RELEVANT READ CODES)
- null

**SEX (RETIRED)\_ renamed from SEX**

Change to Data Element: Changed Description, Name, status to Retired, linked Attribute

Format/Length:	n1
National Codes:	See <a href="#">PERSON GENDER CODE</a>
Default Codes:	

**Notes:**

~~[SEX](#) is the same as the attribute [PERSON GENDER CODE](#).~~

~~**SEX will be replaced with [PERSON STATED GENDER CODE](#) or [PERSON PHENOTYPIC SEX](#), which is the most recent approved national information standard to describe the required definition. This item has been retired from the NHS Data Model and Dictionary.**~~

The last live version of this item is available in the March 2016 release of the NHS Data Model and Dictionary.

Access to this version can be obtained by emailing [information.standards@hscic.gov.uk](mailto:information.standards@hscic.gov.uk) with "NHS Data Model and Dictionary - Archive Request" in the email subject line.

---

**SEX (RETIRED)** renamed from SEX

Change to Data Element: Changed Description, Name, status to Retired, linked Attribute

## SEX

**Attribute:**

[PERSON GENDER CODE](#)

---

**SEX (RETIRED)** renamed from SEX

Change to Data Element: Changed Description, Name, status to Retired, linked Attribute

- Changed Description
- Changed Name from Data\_Dictionary.Data\_Field\_Notes.S.Set.SEX to Retired.Data\_Dictionary.Data\_Field\_Notes.S.SEX
- Retired SEX
- null

---

**SMOKING STATUS (RETIRED)** renamed from SMOKING STATUS

Change to Data Element: Changed Description, Name, status to Retired, linked Attribute

Format/Length:	n1
National Codes:	See <a href="#">SMOKING STATUS</a>
Default Codes:	9 Unknown

**Notes:**

[SMOKING STATUS](#) is the same as attribute [SMOKING STATUS](#).

~~**SMOKING STATUS** will be replaced with [SMOKING STATUS CODE](#), which is the most recent approved national information standard to describe the required definition. This item has been retired from the NHS Data Model and Dictionary.~~

The last live version of this item is available in the March 2016 release of the NHS Data Model and Dictionary.

Access to this version can be obtained by emailing [information.standards@hscic.gov.uk](mailto:information.standards@hscic.gov.uk) with "NHS Data Model and Dictionary - Archive Request" in the email subject line.

---

**SMOKING STATUS (RETIRED)** renamed from SMOKING STATUS

Change to Data Element: Changed Description, Name, status to Retired, linked Attribute

## SMOKING STATUS

**Attribute:**

[SMOKING STATUS](#)

---

**SMOKING STATUS (RETIRED)\_ renamed from SMOKING STATUS**

---

Change to Data Element: Changed Description, Name, status to Retired, linked Attribute

- Changed Description
- Changed Name from Data\_Dictionary.Data\_Field\_Notes.S.Sk.SMOKING\_STATUS to Retired.Data\_Dictionary.Data\_Field\_Notes.S.SMOKING\_STATUS
- Retired SMOKING STATUS
- null

---

**SMOKING STATUS CODE**

---

Change to Data Element: Changed Description

Format/Length:	an1
National Codes:	See <a href="#">SMOKING STATUS</a>
Default Codes:	9 - Unknown (Not Recorded)

**Notes:**

[SMOKING STATUS CODE](#) is the same as attribute [SMOKING STATUS](#).

Code '9 - Unknown' is not a valid code in the [NHS Health Checks Data Set](#).

~~**SMOKING STATUS will be replaced with SMOKING STATUS CODE, which is the most recent approved national information standard to describe the required definition.**~~

---

**URINARY ALBUMIN LEVEL TESTING METHOD (RETIRED)\_ renamed from URINARY ALBUMIN LEVEL TESTING METHOD**

---

Change to Data Element: Changed Description, Name, status to Retired

Format/Length:	n2
National Codes:	
Default Codes:	

**Notes:**

~~[URINARY ALBUMIN LEVEL TESTING METHOD](#) is the method used to determine the [PERSON OBSERVATION \(URINARY ALBUMIN LEVEL\)](#).~~

The urine specimen used to check for albuminuria may be collected in several ways depending on local preference. Staging definitions vary by method so [PERSON OBSERVATION \(URINARY ALBUMIN LEVEL\)](#) must be accompanied by the method used. **This item has been retired from the NHS Data Model and Dictionary.**

~~*Permitted National Codes:* **The last live version of this item is available in the March 2016 release of the NHS Data Model and Dictionary.**~~

- 01 Albumin concentration (mg/L)
- 02 Albumin creatinine ratio (mg/mmol)
- 03 Timed overnight albumin (µg/min)
- 04 24hr albumin excretion (mg/24hr)

**Access to this version can be obtained by emailing [information.standards@hscic.gov.uk](mailto:information.standards@hscic.gov.uk) with "NHS Data Model and Dictionary - Archive Request" in the email subject line.**

**URINARY ALBUMIN LEVEL TESTING METHOD (RETIRED). renamed from URINARY ALBUMIN LEVEL TESTING METHOD**

---

Change to Data Element: Changed Description, Name, status to Retired

- Changed Description
  - Changed 

Name	from
Data_Dictionary.Data_Field_Notes.U.Ur.URINARY_ALBUMIN_LEVEL_TESTING_METHOD	to
Retired.Data_Dictionary.Data_Field_Notes.U.URINARY_ALBUMIN_LEVEL_TESTING_METHOD	
  - Retired URINARY ALBUMIN LEVEL TESTING METHOD
- 

For enquiries about this Change Request, please email [information.standards@hscic.gov.uk](mailto:information.standards@hscic.gov.uk)